

# FLORIDA AGRICULTURAL STATISTICS

## Citrus Summary 1994-95

FLORIDA DEPARTMENT OF AGRICULTURE  
AND CONSUMER SERVICES

BOB CRAWFORD, COMMISSIONER

FLORIDA AGRICULTURAL  
STATISTICS SERVICE

Robert L. Freie, State Statistician

DIVISION OF MARKETING  
AND DEVELOPMENT

Nelson L. Pugh, Director

Cooperating with

U.S. Department of Agriculture  
Agricultural Marketing Service  
and  
National Agricultural Statistics Service

### ACKNOWLEDGMENT

The acreage, production, utilization, monthly and season average price, and crop value statistics for Florida as shown in this summary are official estimates of the Florida Agricultural Statistics Service. Corresponding data for other citrus states are from official reports of the USDA, National Agricultural Statistics Service. Canned and frozen pack statistics were compiled by the Florida Citrus Processors Association. Where data are from other sources, appropriate references appear.

Records of the Division of Fruit and Vegetables, Florida Department of Agriculture and Consumer Services, were used in preparing production and utilization estimates. The Citrus Administrative Committee assisted in assembling these data.

Many producers, shippers, processors, sales agencies, transportation firms, and others associated with the citrus industry voluntarily supplied basic data used to develop these statistics. Their contributions are sincerely appreciated.

This report was assembled under the direction of Robert R. Terry, Candice T. Erick, and Rhonda L. Johnson of the Florida Agricultural Statistics Service.

For information call: (407) 648-6015.

Published January 1996

## CONTENTS

	Page		Page
Narrative on 1994-95 season		Colored seedless grapefruit . . . . .	22
Weather highlights . . . . .	1	Limes . . . . .	23
Production summary . . . . .	2	Tangelos . . . . .	24
Value and prices . . . . .	3	K-Early Citrus Fruit . . . . .	24
Citrus production, 1886 to date and history of Florida citrus industry . . . . .	4	Temples . . . . .	24
Citrus acreage and production, by states		Early tangerines . . . . .	25
Principal citrus fruits . . . . .	5	Honey tangerines . . . . .	25
Oranges . . . . .	6	Dancy tangerines . . . . .	25
Grapefruit . . . . .	7	Florida citrus production, by counties, areas, and fruit types . . . . .	26
Florida trees, acreage, yield, production, utilization, season average on-tree price, and value of sales		Florida citrus acreage, by counties and fruit types . . . . .	27
All oranges . . . . .	8	Florida citrus trees, by counties and fruit types . . . . .	28
Early and midseason oranges . . . . .	8	Other states' citrus acreage . . . . .	29
Late (Valencia) oranges . . . . .	9	Florida citrus received by major cities . . . . .	30
Temples . . . . .	9	Citrus fresh shipments by states and imports to U.S.	
All grapefruit . . . . .	10	Oranges . . . . .	31
Seedy grapefruit . . . . .	10	Grapefruit . . . . .	32
White seedless grapefruit . . . . .	11	Tangerines, tangelos, Temples and K-Earlys . . . . .	33
Colored seedless grapefruit . . . . .	11	Citrus fresh exports by states	
Tangelos . . . . .	12	Oranges, tangelos, and Temples . . . . .	34
All tangerines . . . . .	12	Grapefruit and tangerines . . . . .	35
Limes . . . . .	13	Exports of fresh U.S. citrus, by seasons and types . . . . .	36
Florida tangerines bearing acreage, by varieties . . . . .	13	Exports of fresh U.S. citrus, by destinations and months . . . . .	37
Citrus utilization, season average on-tree prices, and value of sales		Exports of fresh Florida citrus, by weeks and types . . . . .	38
Oranges, by states . . . . .	14	Exports of fresh Florida citrus, by seasons and types . . . . .	39
Oranges, by types and states, and Florida Temples . . . . .	15	Exports of fresh Florida citrus, by destinations and types . . . . .	39
Grapefruit, by states . . . . .	16	Florida processed fruit utilization, by weeks	
Tangerines, by states . . . . .	17	Oranges, grapefruit, and Temples . . . . .	40
Other citrus, limes, and lemons, by states . . . . .	18	Tangelos, tangerines, Honey tangerines, and K-Earlys . . . . .	41
Florida lemons, by types . . . . .	18	Florida citrus, distribution of recorded utilization, by types and months . . . . .	42
Florida grapefruit, by marketing districts		National per capita consumption of citrus . . . . .	43
Production . . . . .	19	Florida FCOJ yields, by types . . . . .	43
Season average on-tree prices . . . . .	19	Production of citrus fruit, by countries and crop years . . . . .	44
Florida citrus products, annual pack . . . . .	20	Data sources . . . . .	45
Florida monthly and season average on-tree prices			
Early and midseason oranges . . . . .	21		
Late (Valencia) oranges . . . . .	21		
White seedless grapefruit . . . . .	22		

**FLORIDA WEATHER HIGHLIGHTS, SELECTED AREAS, AND MONTHS,  
1994-95**

Above normal temperatures and the appearance of bloom buds and new foliage in mid-February 1994 indicated that winter was nearly over. March rains and warmer temperatures put citrus trees in very good to excellent condition. When the rainfall subsided, near ideal conditions prevailed and the bloom cycle progressed rapidly. Except for the lower East Coast, the dry weather continued until hard rains fell in late April.

Irrigation was used in May to maintain good tree condition and the new crop fruit made good progress. A new pest, the citrus leaf miner, affected some young foliage as it was forming. Although eventually found throughout the citrus belt, it did not become a major problem. Summer rains returned in June. The hot summer temperatures and abundant moisture created excellent conditions for new growth.

Tropical Storms Alberto and Beryl brought drenching rains in July and August. Excessive moisture caused some early fruit to split or drop prematurely. Harvest of grapefruit began at the end of the month.

September was a very wet month with mid-month storms followed by two lows bearing even more rain; lakes and ponds were raised to the highest levels in a long time. Harvesting was limited. The dry, cooler weather of October created near ideal picking conditions which continued into November until the arrival of Tropical Storm Gordon.

Light rains provided sufficient moisture in December. Warmer than normal temperatures prevailed during the accelerated harvest of early and midseason fruit. The

new year began a period of below average rainfall. Cooler temperatures returned but January 1995 was punctuated by 70 degree temperatures mid-month. The coldest weather of the season to date ended the month. The crop and trees were undamaged.

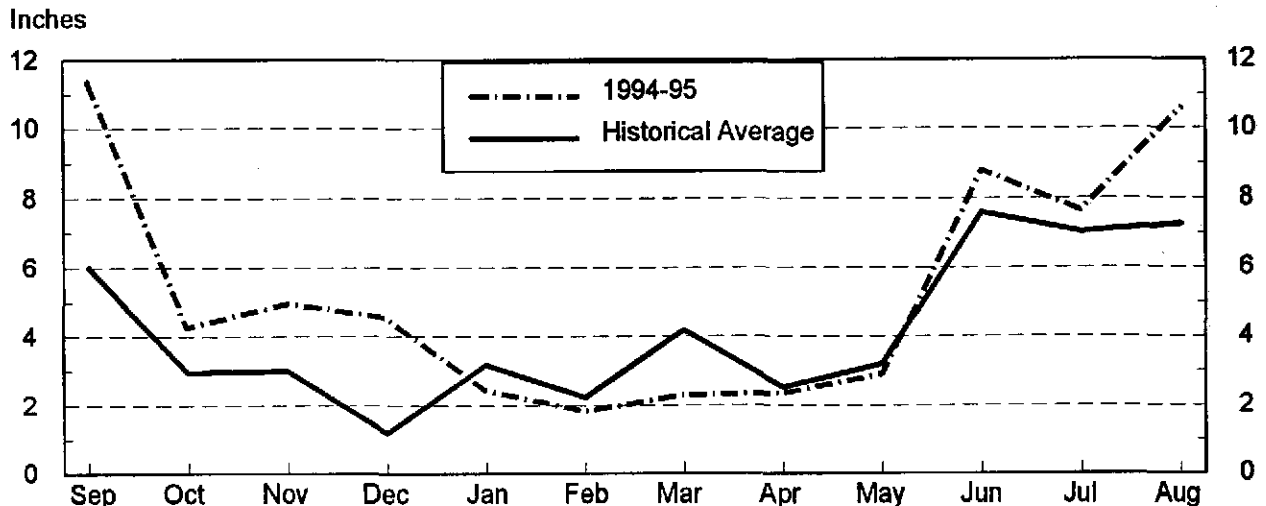
An even colder air mass arrived in February but temperatures were not low for long enough to cause damage. Temperatures soared into the 80s at mid-month causing new foliage and bloom buds to appear. New growth was slowed when milder weather returned. Early March weather was varied--hot, rainy, windy, and cool--before settling into near ideal conditions. Rain brought the soil moisture to an adequate level. The next crop's bloom period progressed normally.

Temperatures warmed through April and irrigation was used to maintain soil moisture during the fruit set period. Conditions improved with rain at the end of the month. May began with hot and humid weather and became hotter and drier. Record highs were set and moisture fell below the desirable level.

Hurricane Allison provided much needed rain in early June. Showers became more frequent until daily summer rains began in mid-July.

In the chart below, the 1994-95 monthly rainfall is compared to the historical average which includes data from two stations in each of the citrus producing areas. The ten stations are: Avon Park, Clermont, Clewiston (AG), Immokalee, Lake Alfred, Orlando, Plant City, Ruskin, Stuart, and Vero Beach (4W).

**FLORIDA PRECIPITATION: Average monthly rainfall, ten selected stations,  
1984-85 through 1993-94 and 1994-95**



## 1994-95 PRODUCTION AND TREE CENSUS

### PRODUCTION

Florida's citrus production increased 15 percent to 270,920,000 boxes in 1994-95. The orange crop was 18 percent larger and the grapefruit crop was up nine percent from the previous season. Florida orange and grapefruit crops comprised over 75 percent of the U.S. production. Production of seedy grapefruit was up from the record low in 1994-95. Limes continue to recover from the effects of Hurricane Andrew in 1992.

Of the specialty fruit, only Temples and early tangerines showed an increase this season. Within the early tangerine category, production of the older Robinson variety is declining but is offset by the increase in the newer varieties Sunburst and Fallglo. The Honey tangerine crop was down over 30 percent and the Dancy crop, down 74 percent, was the lowest on record. Tangelos were down just six percent and K-Early Citrus Fruit was down 43 percent to the lowest level in over 25 years.

The FCOJ all orange final yield as reported by the Florida Citrus Processors Association was 1.49644 gallons per box. Early and midseason fruit yielded 1.44400 gallons per box and the late (Valencia) portion of the crop was final at 1.58230. Record highs for early-mids (1.52480) and all oranges (1.57893) were achieved in the 1992-93 season; the Valencia record of 1.69608 was attained in 1991-92.

California grapefruit totaled 9.3 million boxes with desert production down slightly and a small increase in the other areas. The lemon crop at 20.5 million boxes was down slightly. Smaller Navel and Valencia crops combined for an all orange harvest of 61.0 million boxes.

Yield per acre and bearing acreage were lower this season for Arizona's citrus production. Lemon production was down 31 percent. Orange production dropped 45 percent to 1.05 million boxes and harvested grapefruit was down 20 percent at 1.4 million boxes.

Orange production in Texas nearly doubled to 1.055 million boxes. The grapefruit crop increased 55 percent to 4.65 million boxes. Over two-thirds of the orange and grapefruit crops were shipped fresh.

**CITRUS BOX WEIGHTS:** Approximate net weight in pounds by fruit type and states

States	Oranges	Grapefruit	Tangerines	Lemons	Limes
FL	90 <sup>1/</sup>	85	95	90	88
CA	75	67 <sup>2/</sup>	75	76	--
TX	85	80	--	--	--
AZ	75	67 <sup>3/</sup>	75	76	--

<sup>1/</sup> Includes Temples and tangelos at 90 pounds.

<sup>2/</sup> Was 65 pounds prior to the 1993-94 season.

<sup>3/</sup> Was 64 pounds prior to the 1993-94 season.

### TREE CENSUS

The Florida Agricultural Statistics Service first indexed the State's commercial citrus groves on aerial photography as of January 1966. Ground crews identify all the State's groves by fruit type, row spacing, and year in which set. Photo interpreters in the Orlando office then delineate the groves by variety blocks on photo transparencies at a scale of 1 inch to 660 feet. Variety blocks are measured with planimeters to obtain acreage and then indexed by land section.

The design of the inventory survey allows for quick and economical updating. Since 1966, the citrus belt has been resurveyed each second winter (1968 through 1994) to determine changes. Photographing begins in November when weather conditions are most favorable and is generally completed in 80 to 90 days. The same three-mile-wide flight lines established in 1966 are photographed on each succeeding flight. Approximately 14,000 square miles of photography are obtained at a 1 to 30,000 scale.

The last statewide survey was conducted as of January 1994. Through 1993, all types of citrus planted totaled 853,742 acres, up 8 percent from the 791,290 acres recorded in January 1992. Acreage increased in all but three of the thirty-five citrus counties since the previous census and the Gulf Citrus area showed a 12 percent acreage gain. A record number of trees, 103.7 million, are planted with 25 percent still non-bearing.

Photographing for the next survey began in November 1995, and field work will update the acreage records as of January 1996.

**FLORIDA, ALL CITRUS:** Acres in commercial groves as of January 1966-1994, with percent changes

Year	Acres	Percent change from	
		Previous survey	1966 survey
1966	858,082	--	--
1968	931,249	+8.5	+8.5
1970	941,471	+1.1	+9.7
1972	878,019	-6.7	+2.3
1974	864,098	-1.6	+0.7
1976	852,369	-1.4	-0.7
1978	831,235	-2.5	-3.1
1980	845,283	+1.7	-1.5
1982	847,856	+0.3	-1.2
1984	761,365	-10.2	-11.3
1986	624,492	-18.0	-27.2
1988	697,929	+11.8	-18.7
1990	732,767	+5.0	-14.6
1992	791,290	+8.0	-7.8
1994	853,742	+7.9	-0.5

## 1994-95 VALUE OF SALES, PRICES, AND EXPORTS

### VALUE

Lower prices and increased picking, packing, and hauling charges resulted in the lowest value to the industry since the 1985-86 season. The preliminary on-tree value of all citrus for the 1994-95 season was \$821 million, 10 percent lower than the revised 1993-94 value. Revision slightly lowered the value of the 1992-93 crop.

Preliminary value is based on that part of the crop priced at harvest, which amounts to all of the fresh fruit and about 37 percent of the processed. When all participation plans and cooperative pools are finalized, a revised value will be calculated.

An 18 percent increase in production helped offset lower prices with the orange crop value down only four percent. The preliminary season on-tree orange price was \$3.32 compared with the revised 1993-94 price of \$4.09. Although grapefruit production was up nine percent, with the preliminary price of \$1.48, the crop value was down 43 percent. The revised on-tree grapefruit price for 1993-94 was \$2.83.

Specialty fruit returns were lower for all types except the Dancy and Honey tangerines which had reduced crops. Only the Temples and Honey tangerines had total crop values which were higher than those of the previous season.

The season average delivered-in price of fruit going into FCOJ reported by the Florida Citrus Processors Association was \$5.23 per box or \$0.86 per pound of solids. Early-mids averaged \$4.53 per box or \$0.77 per pound of solids, and late oranges averaged \$6.21 per box or \$0.97 per pound.

**FLORIDA, ALL CITRUS:** Value of sales on-tree,  
crop years 1985-86 through 1994-95

Crop year	Value 1,000 dol.	Crop Year	Value 1,000 dol.
1985-86	725,035	1990-91	1,236,126
1986-87	941,078	1991-92	1,208,944
1987-88	1,443,116	1992-93 <sup>1/</sup>	855,812
1988-89	1,429,808	1993-94 <sup>1/</sup>	916,959
1989-90	952,303	1994-95 <sup>2/</sup>	820,597

<sup>1/</sup> Revised. <sup>2/</sup> Preliminary.

### FOREIGN EXPORTS

Fresh fruit exports totaled 25.4 million 4/5 bushel cartons, down slightly from last season. Canada accounts for the most receipts of Florida oranges and specialty fruit while Japan receives the most grapefruit.

A total of 24.6 million gallons of FCOJ were exported, mostly to Canada. There were also 7.1 million gallons of FCGJ exported.

### PRICES

All on-tree prices represent the average price received by growers for their fruit by types. Prices are based on records of commercial fresh fruit sales and processed fruit returns. The term "on-tree" relates to fruit returns to the grower after the costs of picking, hauling, and packing have been removed.

Each season, beginning with the first month that three percent of a fruit type is harvested, monthly estimates are computed. Reports from fresh fruit sales organizations and from packers provide data for an average f.o.b. price. Processors report an average spot and cash price for fruit delivered to their plants. From these values, an estimated charge for picking, hauling, and packing is deducted to arrive at an on-tree price. The anticipated box utilization for the month is used to combine the fresh and processing price to obtain an average price for all methods of sales. At the end of the season, monthly price averages are computed and weighted by boxes utilized, to provide the preliminary season average price.

A year later, after most processed products are sold, cooperatives and firms with participation plans report prices of fruit they handled. These prices, combined with the spot and cash prices collected earlier, are weighted together by varieties to determine the final processing price received by growers. From this price, charges for picking, hauling, and packing, as estimated by University of Florida economists, are deducted to arrive at the final on-tree price received by growers.

### COUNTY PRODUCTION

Estimates of citrus production by counties were prepared using objective survey data obtained from the citrus crop estimates program. Production for Florida has been distributed to counties based on the biennial citrus tree census, limb count survey data adjusted for droppage to end of season, and size data at maturity.

Tree numbers by county which are used in the estimates were obtained from the latest tree census. Productivity per tree is obtained from several objective fruit surveys including limb count, size, and droppage. Because of the statistical sampling design, counties with higher production in general have a greater number of samples and, therefore, estimates for these counties can be considered more reliable. Thus, for the same reason, estimates for the production areas are more reliable than for the individual counties.

**FLORIDA CITRUS: Production of all citrus since 1887-88**

Crop year	Type of fruit				Crop year	Type of fruit			
	Oranges	Grape-fruit	Other	Total		Oranges	Grape-fruit	Other	Total
	1,000 boxes					1,000 boxes			
1887-88	---	---	---	1,450	1941-42	26,800	19,200	2,650	48,650
1888-89	---	---	---	1,950	1942-43	36,650	27,300	4,925	68,875
1889-90	---	---	---	2,150	1943-44	45,500	31,000	4,490	80,990
1890-91	---	---	---	2,450	1944-45	42,230	22,300	4,670	69,200
1891-92	---	---	---	2,713	1945-46	49,000	32,000	5,200	86,200
1892-93	---	---	---	3,450	1946-47	52,080	26,400	4,790	83,270
1893-94	---	---	---	5,055	1947-48	57,530	29,300	4,440	91,270
1894-95	---	---	---	2,808	1948-49	57,380	30,200	5,520	93,100
1895-96	---	---	---	147	1949-50	57,790	24,200	5,970	87,960
1896-97	---	---	---	218	1950-51	66,200	33,200	5,980	105,380
1897-98	---	---	---	359	1951-52	76,900	33,000	6,060	115,960
1898-99	---	---	---	252	1952-53	70,500	32,500	6,920	109,920
1899-00	---	---	---	274	1953-54	89,100	40,700	7,070	136,870
1900-01	---	---	---	353	1954-55	85,900	34,800	7,998	128,698
1901-02	---	---	---	974	1955-56	88,200	38,300	7,935	134,435
1902-03	---	---	---	1,147	1956-57	90,300	37,400	8,020	135,720
1903-04	---	---	---	1,955	1957-58	81,000	31,100	4,300	116,400
1904-05	---	---	---	2,961	1958-59	83,000	35,200	7,800	126,000
1905-06	---	---	---	3,794	1959-60	87,600	30,500	7,470	125,570
1906-07	---	---	---	3,801	1960-61	82,700	31,600	9,940	124,240
1907-08	---	---	---	3,250	1961-62	108,800	34,800	10,210	153,810
1908-09	---	---	---	4,634	1962-63	72,500	30,000	5,250	107,750
1909-10	5,300	1,100	---	6,400	1963-64	54,900	26,300	8,620	89,820
1910-11	3,600	1,200	---	4,800	1964-65	82,400	31,900	9,350	123,650
1911-12	3,950	1,150	---	5,100	1965-66	95,900	34,900	10,190	140,990
1912-13	6,700	2,000	---	8,700	1966-67	139,500	43,600	11,895	194,995
1913-14	6,200	2,200	---	8,400	1967-68	100,500	32,900	10,880	144,280
1914-15	8,000	2,400	---	10,400	1968-69	129,700	39,900	12,470	182,070
1915-16	6,500	2,400	---	8,900	1969-70	137,700	37,400	13,915	189,015
1916-17	5,700	2,500	---	8,200	1970-71	142,300	42,900	14,450	199,650
1917-18	4,000	2,000	---	6,000	1971-72	137,000	47,000	16,480	200,480
1918-19	6,000	3,500	---	9,500	1972-73	169,700	45,400	15,450	230,550
1919-20	7,550	5,900	478	13,928	1973-74	165,800	48,100	16,350	230,250
1920-21	8,700	5,800	726	15,226	1974-75	173,300	44,600	17,830	235,730
1921-22	7,850	6,700	583	15,133	1975-76	181,200	49,100	19,180	249,480
1922-23	10,150	7,800	785	18,735	1976-77	186,800	51,500	16,200	254,500
1923-24	13,150	8,500	590	22,240	1977-78	167,800	51,400	16,270	235,470
1924-25	10,400	8,900	936	20,236	1978-79	164,000	50,000	16,190	230,190
1925-26	9,500	7,600	730	17,830	1979-80	206,700	54,800	22,050	283,550
1926-27	10,100	8,600	912	19,612	1980-81	172,400	50,300	15,880	238,580
1927-28	8,650	7,500	850	17,000	1981-82	125,800	48,100	15,310	189,210
1928-29	15,000	11,300	1,506	27,806	1982-83	139,600	39,400	14,600	193,600
1929-30	8,950	8,300	858	18,108	1983-84	116,700	40,900	11,945	169,545
1930-31	16,800	15,800	2,408	35,008	1984-85	103,900	44,000	11,005	158,905
1931-32	12,200	10,700	2,009	24,909	1985-86	119,200	46,750	10,065	176,015
1932-33	14,500	11,600	1,910	28,010	1986-87	119,700	49,800	12,030	181,530
1933-34	15,900	10,900	2,012	28,812	1987-88	138,000	53,850	12,250	204,100
1934-35	15,600	15,200	2,015	32,815	1988-89	146,600	54,750	12,500	213,850
1935-36	15,900	11,500	2,112	29,512	1989-90	110,200	35,700	8,285	154,185
1936-37	19,100	18,100	3,045	40,245	1990-91	151,600	45,100	8,960	205,660
1937-38	23,900	14,600	2,370	40,870	1991-92	139,800	42,400	9,615	191,815
1938-39	29,900	23,300	3,495	56,695	1992-93	186,600	55,150	9,790	251,540
1939-40	25,350	15,900	2,745	43,995	1993-94	174,400	51,050	10,310	235,760
1940-41	28,200	24,600	3,180	55,980	1994-95	205,400	55,700	9,820	270,920

Source: See page 45, Data Sources, item 2.

**HISTORY OF FLORIDA'S CITRUS INDUSTRY**

The citrus tree is a native of the Orient. From there it was carried ever westward by man, to India, to the Mediterranean, and on across the Atlantic. Citrus was brought to the Americas by Columbus. When he landed on November 22, 1493, he brought citrus seeds that were planted on the island of Haiti. The first seeds planted on the mainland of the Americas were brought by the expedition of Juan de Grijalva when he landed in Central America between July 12 and July 20, 1518. The exact date of the introduction of citrus trees into Florida is not known, but from a statement made by Pedro Medendez, dated April 2, 1579, it appears that citrus fruits were grown in abundance around St. Augustine at that time. Early settlers in Florida some two centuries later found wild citrus trees scattered over the State. One of the oldest cultivated groves planted in Florida (Hume, 1926 p.95) is thought to have been the Don Phillipe grove in Pinellas County, planted sometime between 1809 and 1820.

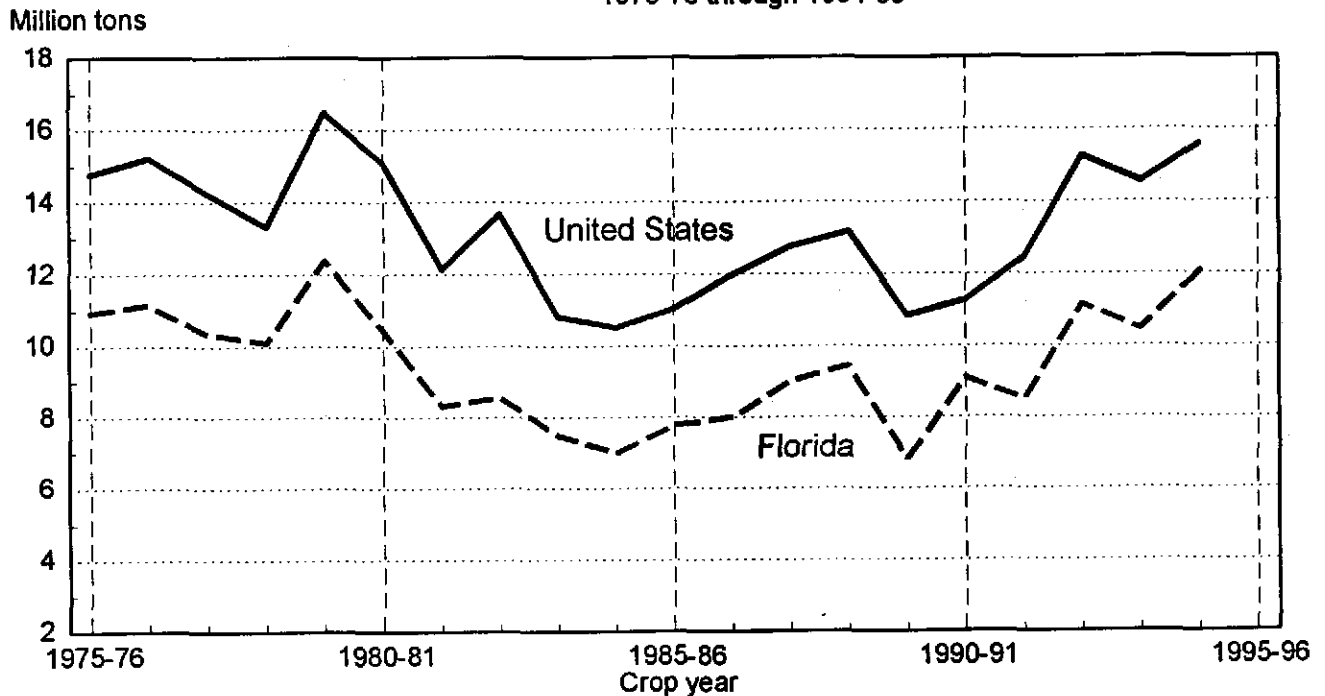
Citrus production in Florida had reached an all time high of more than 5 million boxes when the Great Freeze of 1894-95 almost totally wiped out the citrus industry. It was not until 1909-10 that this level was reached again. In 1994-95, Florida had 75 percent of the Nation's production.

**PRINCIPAL CITRUS FRUITS: Bearing acreage and production, by states,  
crop years 1975-76 through 1994-95**

Crop year	Florida		California		Texas		Arizona		United States	
	Bearing acreage	Production 1/	Bearing acreage	Production	Bearing acreage	Production	Bearing acreage	Production	Bearing acreage	Production 1/
	1,000 acres	1,000 tons	1,000 acres	1,000 tons	1,000 acres	1,000 tons	1,000 acres	1,000 tons	1,000 acres	1,000 tons
1975-76	796.2	10,943	272.1	2,842	64.1	687	61.2	316	1,193.6	14,788
1976-77	794.9	11,179	267.4	2,816	63.9	789	58.5	458	1,184.7	15,242
1977-78	756.4	10,349	264.6	2,695	68.4	736	52.6	475	1,142.0	14,255
1978-79	751.5	10,101	265.7	2,189	67.6	632	45.8	407	1,130.6	13,329
1979-80	758.4	12,418	265.3	3,208	71.7	487	47.7	371	1,143.1	16,484
1980-81	753.8	10,470	265.6	3,703	66.8	452	43.7	480	1,129.9	15,105
1881-82	747.9	8,331	264.8	2,541	64.8	808	46.8	459	1,124.3	12,139
1982-83	723.0	8,574	260.0	3,945	66.2	689	42.4	474	1,091.6	13,682
1983-84	639.8	7,485	259.3	2,783	67.6	235	41.2	329	1,007.9	10,832
1984-85	575.9	7,014	254.5	3,069	30.5	0	38.4	442	899.3	10,525
1985-86	507.8	7,785	252.8	2,930	21.8	23	36.5	320	818.9	11,058
1986-87	514.5	8,009	250.7	3,377	25.5	115	35.5	493	826.2	11,994
1987-88	519.5	9,020	250.7	3,235	27.1	213	35.6	293	832.9	12,761
1988-89	528.7	9,456	253.9	3,163	28.9	271	36.0	296	847.5	13,186
1989-90	534.6	6,823	249.4	3,649	31.7	131	36.1	257	851.8	10,860
1990-91	555.7	9,127	251.0	1,837	8.0	0	35.2	321	849.9	11,285
1991-92	583.6	8,510	254.5	3,522	11.0	4	37.0	416	886.1	12,452
1992-93	639.3	11,175	255.9	3,662	14.5	97	37.7	340	947.4	15,274
1993-94	665.8	10,484	256.5	3,569	18.2	144	37.6	364	978.1	14,561
1994-95	731.7	12,050	263.6	3,462	21.9	230	35.4	248	1,052.6	15,990

1/ Does not include Florida lemons. K-Early Citrus Fruit not included prior to 1992-93. Honey tangerines not included prior to 1981-82, Sunburst tangerines not included prior to 1989-90, and Fallglo tangerines not included prior to 1993-94.

**PRINCIPAL CITRUS FRUITS: Production for the United States and Florida,  
1975-76 through 1994-95**

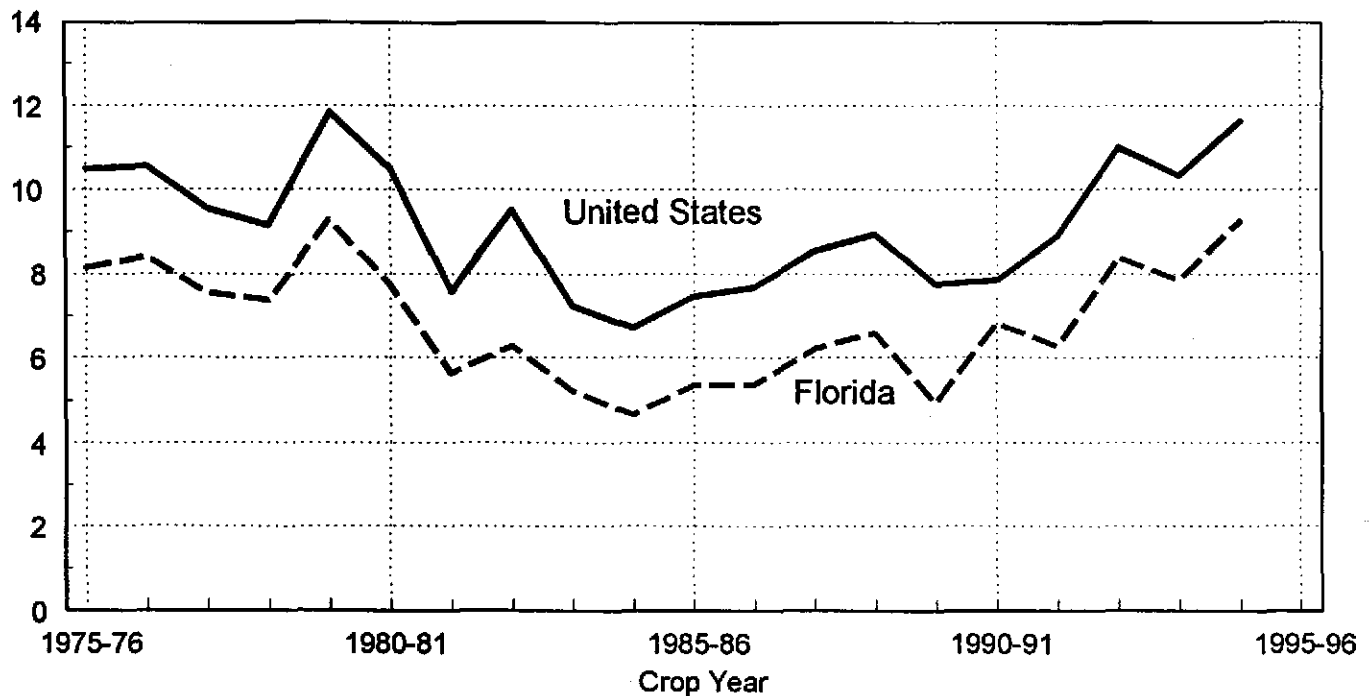


**ORANGES: Bearing acreage and production, by states,  
crop years 1975-76 through 1994-95**

Crop year	Florida		California		Texas		Arizona		United States	
	Bearing acreage	Production	Bearing acreage	Production	Bearing acreage	Production	Bearing acreage	Production	Bearing acreage	Production
	1,000 acres	1,000 tons	1,000 acres	1,000 tons	1,000 acres	1,000 tons	1,000 acres	1,000 tons	1,000 acres	1,000 tons
1975-76	596.4	8,154	197.7	1,980	30.9	259	23.0	100	848.0	10,493
1976-77	594.3	8,406	192.5	1,699	28.2	293	21.0	148	836.0	10,546
1977-78	579.0	7,551	188.6	1,599	28.4	260	16.8	136	812.8	9,546
1978-79	571.5	7,380	187.1	1,399	27.8	272	14.8	109	801.2	9,160
1979-80	576.6	9,302	185.7	2,228	28.0	171	15.7	131	806.0	11,832
1980-81	573.4	7,758	182.7	2,447	25.3	184	13.2	98	794.6	10,487
1881-82	560.2	5,661	180.2	1,572	23.7	252	13.6	115	777.7	7,600
1982-83	536.8	6,282	177.4	2,854	24.0	241	12.6	142	750.8	9,519
1983-84	474.2	5,252	177.1	1,819	24.3	107	12.6	65	688.2	7,243
1984-85	420.1	4,676	175.3	1,966	11.4	0	10.9	77	617.7	6,719
1985-86	367.6	5,364	174.6	2,022	8.3	14	11.0	76	561.5	7,476
1986-87	375.4	5,387	172.9	2,172	10.3	37	10.9	101	569.5	7,697
1987-88	380.2	6,210	172.6	2,212	11.1	61	10.6	68	574.5	8,551
1988-89	388.7	6,597	177.6	2,209	12.0	79	10.4	64	588.7	8,949
1989-90	399.5	4,959	175.1	2,676	13.0	51	10.2	59	597.8	7,745
1990-91	420.9	6,822	178.4	960	3.5	0	9.9	66	612.7	7,848
1991-92	444.4	6,291	181.8	2,528	3.5	1	10.4	89	640.1	8,909
1992-93	489.2	8,397	184.0	2,505	4.4	21	10.6	69	688.2	10,992
1993-94	510.8	7,848	185.0	2,385	5.5	24	10.6	72	711.9	10,329
1994-95	562.8	9,243	191.0	2,288	7.0	45	10.4	40	771.2	11,616

**ORANGES: Production for the United States and Florida,  
1975-76 through 1994-95**

Million Tons



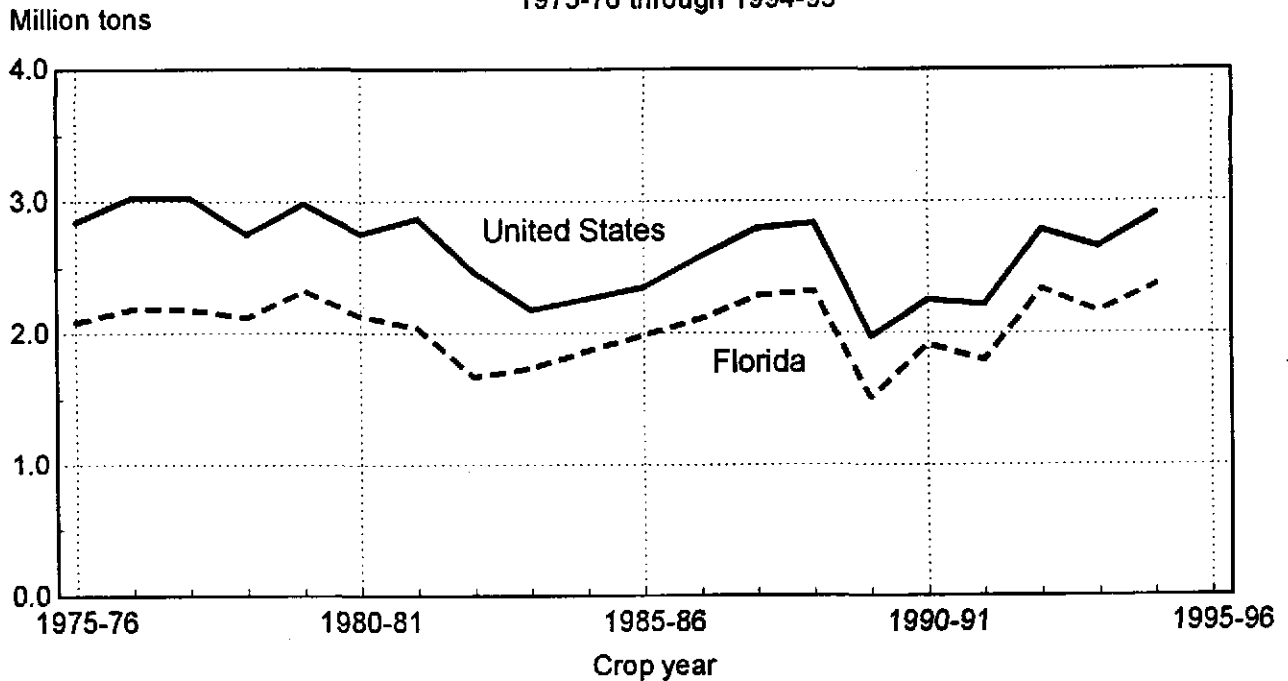


**GRAPEFRUIT: Bearing acreage and production, by states,  
crop years 1975-76 through 1994-95**

Crop year	Florida		Texas		California 1/		Arizona 1/		United States	
	Bearing acreage	Production	Bearing acreage	Production	Bearing acreage	Production	Bearing acreage	Production	Bearing acreage	Production
	1,000 acres	1,000 tons	1,000 acres	1,000 tons	1,000 acres	1,000 tons	1,000 acres	1,000 tons	1,000 acres	1,000 tons
1975-76	117.9	2,088	33.1	428	16.4	234	9.6	100	177.0	2,850
1976-77	119.3	2,190	35.1	496	16.6	250	10.2	96	181.2	3,032
1977-78	120.3	2,184	40.1	476	17.4	274	10.8	96	188.6	3,030
1978-79	124.6	2,125	39.8	360	19.5	200	8.9	72	192.8	2,757
1979-80	126.4	2,329	43.8	316	21.3	245	8.4	96	199.9	2,986
1980-81	125.6	2,138	41.5	268	21.8	263	8.1	90	197.0	2,759
1881-82	127.8	2,044	41.1	556	22.0	201	8.2	77	199.1	2,878
1982-83	128.6	1,674	42.2	448	21.7	238	6.8	105	199.3	2,465
1983-84	119.6	1,738	43.3	128	21.9	238	6.8	80	191.6	2,184
1984-85	115.5	1,870	19.1	0	21.1	289	7.1	107	162.8	2,266
1985-86	105.1	1,987	13.5	9	20.9	266	5.7	90	145.2	2,352
1986-87	106.0	2,116	15.2	77	20.8	305	5.9	88	147.9	2,586
1987-88	106.0	2,289	16.0	152	20.7	298	6.0	62	148.7	2,801
1988-89	106.9	2,327	16.9	192	19.9	263	6.5	62	150.2	2,844
1989-90	103.0	1,517	18.7	80	19.2	310	6.4	71	147.3	1,978
1990-91	104.2	1,916	4.5	0	18.3	263	6.2	77	133.2	2,256
1991-92	104.7	1,802	7.5	3	18.5	330	5.9	89	136.6	2,224
1992-93	111.9	2,344	10.1	75	17.8	303	5.9	69	145.7	2,791
1993-94	118.3	2,170	12.8	120	18.0	312	5.9	59	155.0	2,661
1994-95	127.3	2,367	15.0	186	18.4	312	5.6	47	166.3	2,912

1/ Box weight for California Desert and Arizona grapefruit changed in 1993-94.

**GRAPEFRUIT: Production for the United States and Florida,  
1975-76 through 1994-95**



**FLORIDA CITRUS: Trees, acreage, yield, production, utilization, season average price, and value for crop years 1975-76 through 1994-95 1/**

Crop year	Bearing trees	Bearing acreage	Yield per acre	Utilization of production			On-tree	
				Total	Fresh	Processed	Price per box	Value of production
	1,000 trees	1,000 acres	Boxes	1,000 boxes			Dollars	1,000 dollars
<b>ALL ROUND ORANGES</b>								
1975-76	48,374	596.4	304	181,200	11,730	169,470	1.77	321,449
1976-77	48,278	594.3	314	186,800	8,878	177,922	2.17	405,982
1977-78	42,455	579.0	290	167,800	9,966	157,834	4.14	693,677
1978-79	46,955	571.5	287	164,000	11,701	152,299	4.66	764,961
1979-80	47,366	576.6	358	206,700	10,990	195,710	3.72	768,877
1980-81	47,079	573.4	301	172,400	8,276	164,124	4.04	697,231
1981-82	46,079	560.2	225	125,800	7,620	118,180	4.28	538,686
1982-83	44,228	536.8	260	139,600	10,320	129,280	5.15	718,420
1983-84	39,778	474.3	246	116,700	7,640	109,060	5.75	670,618
1984-85	35,415	420.1	247	103,900	6,652	97,248	7.10	737,923
1985-86	32,708	367.6	324	119,200	8,960	110,240	3.94	469,959
1986-87	33,752	375.4	319	119,700	8,870	110,830	5.22	624,771
1987-88	35,537	380.2	363	138,000	9,520	128,480	7.58	1,046,700
1988-89	36,750	388.7	377	146,600	8,488	138,112	7.41	1,086,319
1989-90	40,666	399.5	276	110,200	5,922	104,278	6.21	684,226
1990-91	44,077	420.9	360	151,600	12,451	139,149	5.89	892,675
1991-92	49,577	444.4	315	139,800	11,552	128,248	5.93	828,749
1992-93	56,601	489.2	381	186,600	10,724	175,876	3.48	649,713
1993-94	61,708	510.8	341	174,400	9,898	164,502	4.09	713,312
1994-95	69,295	562.8	365	205,400	10,453	194,947	3.32	682,657
<b>EARLY AND MIDSEASON ORANGES (Including Navels)</b>								
1975-76	25,265	308.4	320	98,800	6,485	92,315	1.69	166,911
1976-77	25,145	306.9	375	115,000	6,131	108,869	1.89	216,967
1977-78	24,682	299.0	295	88,300	5,750	82,550	3.90	344,268
1978-79	24,502	295.5	308	91,000	6,325	84,675	4.44	403,767
1979-80	24,732	298.9	394	117,900	6,476	111,424	3.59	423,324
1980-81	24,569	297.2	355	105,600	5,788	99,812	3.67	387,714
1981-82	24,016	289.6	256	74,000	4,929	69,071	4.27	316,316
1982-83	23,065	277.8	253	70,200	6,067	64,133	4.88	342,914
1983-84	20,126	237.3	294	69,700	4,939	64,761	5.09	354,800
1984-85	17,470	198.3	277	55,000	4,418	50,582	7.30	401,369
1985-86	16,487	182.3	352	64,200	5,121	59,079	3.92	251,366
1986-87	17,320	189.1	348	65,800	5,267	60,533	4.56	300,290
1987-88	18,822	198.1	396	78,500	5,870	72,630	6.72	527,169
1988-89	19,744	205.4	415	85,300	5,434	79,866	6.69	571,082
1989-90	22,034	215.3	316	68,100	4,851	63,249	6.01	409,376
1990-91	23,511	223.3	392	87,500	5,966	81,534	5.38	471,049
1991-92	27,051	243.3	343	83,400	7,780	75,620	5.44	453,501
1992-93	30,379	264.1	433	114,300	6,958	107,342	3.23	369,438
1993-94	32,312	271.7	395	107,300	6,838	100,462	3.76	403,802
1994-95	36,244	299.4	400	119,700	6,682	113,018	2.64	315,415

1/ 1994-95 preliminary.

**FLORIDA CITRUS: Trees, acreage, yield, production, utilization, season average price, and value for crop years 1975-76 through 1994-95 1/**

Crop year	Bearing trees	Bearing acreage	Yield per acre	Utilization of production			On-tree	
				Total	Fresh	Processed	Price per box	Value of production
	1,000 trees	1,000 acres	Boxes	1,000 boxes			Dollars	1,000 dollars
<b>LATE (VALENCIA) ORANGES</b>								
1975-76	23,109	288.0	286	82,400	5,245	77,155	1.88	154,538
1976-77	23,133	287.4	250	71,800	2,747	69,053	2.63	189,015
1977-78	22,773	280.0	284	79,500	4,216	75,284	4.40	349,409
1978-79	22,453	276.0	264	73,000	5,376	67,624	4.95	361,194
1979-80	22,634	277.7	320	88,800	4,514	84,286	3.89	345,553
1980-81	22,510	276.2	242	66,800	2,488	64,312	4.63	309,517
1981-82	22,063	270.6	191	51,800	2,691	49,109	4.29	222,370
1982-83	21,163	259.0	268	69,400	4,253	65,147	5.41	375,506
1983-84	19,652	237.0	198	47,000	2,701	44,299	6.72	315,818
1984-85	17,945	221.8	220	48,900	2,234	46,666	6.88	336,554
1985-86	16,221	185.3	297	55,000	3,839	51,161	3.97	218,593
1986-87	16,432	186.3	289	53,900	3,603	50,297	6.02	324,481
1987-88	16,715	182.1	327	59,500	3,650	55,850	8.73	519,531
1988-89	17,006	183.3	334	61,300	3,054	58,246	8.41	515,237
1989-90	18,632	184.2	229	42,100	1,071	41,029	6.53	274,850
1990-91	20,566	197.6	324	64,100	6,485	57,615	6.58	421,626
1991-92	22,526	201.1	280	56,400	3,772	52,628	6.65	375,248
1992-93	26,222	225.1	321	72,300	3,766	68,534	3.88	280,275
1993-94	29,396	239.1	281	67,100	3,060	64,040	4.61	309,510
1994-95	33,051	263.4	325	85,700	3,771	81,929	4.29	367,242
<b>TEMPLES</b>								
1975-76	1,762	20.5	268	5,500	2,329	3,171	1.79	9,870
1976-77	1,686	20.3	187	3,800	1,184	2,616	2.16	8,189
1977-78	1,628	18.9	259	4,900	2,049	2,851	3.92	19,226
1978-79	1,576	18.3	257	4,700	2,135	2,565	4.89	22,968
1979-80	1,566	18.2	330	6,000	2,784	3,216	2.89	17,356
1980-81	1,521	17.7	203	3,600	1,107	2,493	4.21	15,170
1981-82	1,444	16.8	190	3,200	838	2,362	4.01	12,824
1982-83	1,400	15.8	297	4,700	1,563	3,137	3.99	18,735
1983-84	1,175	13.5	215	2,900	762	2,138	5.34	15,476
1984-85	1,068	12.2	266	3,250	626	2,624	5.59	18,162
1985-86	910	10.0	295	2,950	913	2,037	3.01	8,870
1986-87	856	9.4	362	3,400	1,053	2,347	3.60	12,236
1987-88	862	9.3	382	3,550	1,292	2,258	5.69	20,196
1988-89	859	9.3	403	3,750	869	2,881	5.46	20,474
1989-90	776	8.0	175	1,400	139	1,261	5.64	7,889
1990-91	744	7.7	325	2,500	794	1,706	6.31	15,786
1991-92	720	7.1	331	2,350	848	1,502	6.51	15,289
1992-93	744	7.3	342	2,500	947	1,553	2.99	7,475
1993-94	689	6.7	336	2,250	785	1,465	2.73	6,136
1994-95	695	6.8	375	2,550	787	1,763	2.54	6,482

1/ 1994-95 preliminary.

**FLORIDA CITRUS: Trees, acreage, yield, production, utilization, season average price, and value for crop years 1975-76 through 1994-95 1/**

Crop year	Bearing trees	Bearing acreage	Yield per acre	Utilization of production			On-tree	
				Total	Fresh	Processed	Price per box	Value of production
	1,000 trees	1,000 acres	Boxes	1,000 boxes			Dollars	1,000 dollars
<b>ALL GRAPEFRUIT</b>								
1975-76	8,599	117.9	416	49,100	20,369	28,731	1.47	72,155
1976-77	8,845	119.3	432	51,500	16,393	35,107	1.58	81,116
1977-78	8,970	120.3	427	51,400	18,038	33,362	1.64	84,438
1978-79	9,358	124.6	401	50,000	19,790	30,210	2.41	120,128
1979-80	9,586	126.4	434	54,800	19,501	35,299	3.31	181,208
1980-81	9,658	125.6	400	50,300	17,167	33,133	3.60	181,155
1981-82	9,754	127.8	376	48,100	16,719	31,381	2.09	100,597
1982-83	9,827	128.6	306	39,400	18,313	21,087	1.96	77,221
1983-84	9,193	119.6	342	40,900	16,661	24,239	2.72	111,158
1984-85	8,910	115.5	381	44,000	14,988	29,012	3.67	161,356
1985-86	8,368	105.1	445	46,750	19,620	27,130	4.09	191,068
1986-87	8,491	106.0	470	49,800	20,938	28,862	4.98	248,120
1987-88	8,655	106.0	508	53,850	23,110	30,740	5.57	299,887
1988-89	8,807	106.9	512	54,750	23,902	30,848	4.45	243,874
1989-90	8,748	103.0	347	35,700	13,344	22,356	5.65	201,756
1990-91	9,026	104.2	433	45,100	23,923	21,177	5.66	255,328
1991-92	9,557	104.7	405	42,400	22,841	19,559	6.62	280,629
1992-93	10,546	111.9	493	55,150	23,154	31,996	2.66	146,432
1993-94	11,514	118.3	432	51,050	22,502	28,548	2.83	144,316
1994-95	12,660	127.3	438	55,700	22,256	33,444	1.48	82,518
<b>SEEDY GRAPEFRUIT</b>								
1975-76	1,495	22.6	345	7,800	109	7,691	0.85	6,668
1976-77	1,482	22.5	404	9,100	64	9,036	1.20	10,920
1977-78	1,401	21.0	400	8,400	85	8,315	1.45	12,180
1978-79	1,381	21.3	343	7,300	71	7,229	1.84	13,432
1979-80	1,334	20.0	395	7,900	106	7,794	3.04	24,016
1980-81	1,312	19.6	372	7,300	69	7,231	2.92	21,316
1981-82	1,292	19.3	311	6,000	2/	6,000	1.13	6,780
1982-83	1,261	19.0	253	4,800	2/	4,800	0.70	3,360
1983-84	1,013	15.3	295	4,500	2/	4,500	2.01	9,045
1984-85	928	12.7	228	2,900	2/	2,900	2.58	7,482
1985-86	694	10.3	306	3,150	2/	3,150	3.27	10,301
1986-87	641	9.5	305	2,900	2/	2,900	4.27	12,383
1987-88	622	8.9	309	2,750	2/	2,750	4.99	13,723
1988-89	612	8.7	385	3,350	2/	3,350	3.68	12,328
1989-90	529	7.1	197	1,400	2/	1,400	3.84	5,376
1990-91	457	6.1	262	1,600	2/	1,600	3.93	6,288
1991-92	396	4.9	245	1,200	2/	1,200	4.57	5,484
1992-93	403	5.0	350	1,750	2/	1,750	1.88	3,290
1993-94	386	4.7	223	1,050	2/	1,050	1.78	1,869
1994-95	384	4.6	283	1,300	2/	1,300	1.45	1,885

1/ 1994-95 preliminary. 2/ Fresh sales negligible.

**FLORIDA CITRUS: Trees, acreage, yield, production, utilization, season average price, and value for crop years 1975-76 through 1994-95 1/**

Crop year	Bearing trees	Bearing acreage	Yield per acre	Utilization of production			On-tree	
				Total	Fresh	Processed	Price per box	Value of production
	1,000 trees	1,000 acres	Boxes		1,000 boxes		Dollars	1,000 dollars
<b>WHITE SEEDLESS GRAPEFRUIT</b>								
1975-76	4,778	63.3	447	28,300	11,315	16,985	1.29	36,557
1976-77	4,902	63.6	470	29,900	9,805	20,095	1.49	44,690
1977-78	4,921	64.2	447	28,700	9,026	19,674	1.47	42,323
1978-79	5,096	66.0	445	29,400	10,179	19,221	2.21	65,021
1979-80	5,177	66.9	465	31,100	8,900	22,200	3.12	97,086
1980-81	5,165	66.6	426	28,400	8,195	20,205	3.46	98,285
1981-82	5,083	65.8	415	27,300	8,329	18,971	1.92	52,370
1982-83	5,045	65.4	333	21,800	9,045	12,755	1.51	32,941
1983-84	4,664	60.5	380	23,000	7,642	15,358	2.08	47,885
1984-85	4,491	58.2	426	24,800	5,350	19,450	3.02	74,956
1985-86	4,206	53.4	479	25,600	6,735	18,865	3.56	91,107
1986-87	4,173	53.0	508	26,900	7,086	19,814	4.45	119,693
1987-88	4,126	51.6	566	29,200	8,020	21,180	5.35	156,360
1988-89	4,092	51.1	542	27,700	8,033	19,667	4.33	119,980
1989-90	3,942	48.2	373	18,000	4,054	13,946	5.21	93,737
1990-91	3,888	47.4	458	21,700	8,191	13,509	4.59	99,622
1991-92	3,844	44.9	425	19,100	6,754	12,346	6.46	123,337
1992-93	4,191	47.4	542	25,700	6,087	19,613	2.22	56,973
1993-94	4,554	49.7	493	24,500	6,459	18,041	2.84	69,693
1994-95	4,807	51.8	496	25,700	5,721	19,979	1.78	45,849
<b>COLORED SEEDLESS GRAPEFRUIT</b>								
1975-76	2,326	32.0	406	13,000	8,945	4,055	2.23	28,930
1976-77	2,461	33.2	377	12,500	6,524	5,976	2.04	25,506
1977-78	2,648	35.1	407	14,300	8,927	5,373	2.09	29,935
1978-79	2,880	37.3	357	13,300	9,540	3,760	3.13	41,675
1979-80	3,075	39.5	400	15,800	10,495	5,305	3.80	60,106
1980-81	3,181	39.4	371	14,600	8,903	5,697	4.22	61,554
1981-82	3,379	42.7	347	14,800	8,390	6,410	2.80	41,447
1982-83	3,521	44.2	290	12,800	9,268	3,532	3.20	40,920
1983-84	3,516	43.8	306	13,400	9,019	4,381	4.05	54,228
1984-85	3,491	44.6	365	16,300	9,638	6,662	4.84	78,918
1985-86	3,468	41.4	435	18,000	12,885	5,115	4.98	89,660
1986-87	3,677	43.5	460	20,000	13,852	6,148	5.80	116,044
1987-88	3,907	45.5	481	21,900	15,090	6,810	5.93	129,804
1988-89	4,103	47.1	503	23,700	15,869	7,831	4.71	111,566
1989-90	4,277	47.7	342	16,300	9,290	7,010	6.30	102,643
1990-91	4,681	50.7	430	21,800	15,732	6,068	6.85	149,418
1991-92	5,317	54.9	403	22,100	16,087	6,013	6.87	151,808
1992-93	5,952	59.5	466	27,700	17,067	10,633	3.11	86,169
1993-94	6,574	63.9	399	25,500	16,043	9,457	2.85	72,754
1994-95	7,469	70.9	405	28,700	16,535	12,165	1.21	34,784

1/ 1994-95 preliminary.

**FLORIDA CITRUS: Trees, acreage, yield, production, utilization, season average price, and value for crop years 1975-76 through 1994-95 1/**

Crop year	Bearing trees	Bearing acreage	Yield per acre	Utilization of production			On-tree	
				Total	Fresh	Processed	Price per box	Value of production
	1,000 trees	1,000 acres	Boxes	1,000 boxes			Dollars	1,000 dollars
<b>TANGELOS</b>								
1975-76	1,757	18.6	296	5,500	2,245	3,255	1.42	7,806
1976-77	1,744	18.4	261	4,800	2,295	2,505	1.42	6,814
1977-78	1,694	17.9	274	4,900	1,987	2,913	3.29	16,144
1978-79	1,610	17.1	246	4,200	1,721	2,479	3.90	16,360
1979-80	1,622	17.3	370	6,400	1,807	4,593	2.87	18,351
1980-81	1,568	16.8	292	4,900	2,056	2,844	3.92	19,226
1981-82	1,486	16.1	317	5,100	1,780	3,320	3.58	18,264
1982-83	1,441	15.6	244	3,800	1,878	1,922	4.37	16,596
1983-84	1,143	12.3	293	3,600	1,596	2,004	4.28	15,395
1984-85	938	10.1	356	3,600	1,468	2,132	7.08	25,501
1985-86	894	9.5	311	2,950	1,338	1,612	4.06	11,980
1986-87	889	9.5	421	4,000	1,310	2,690	3.72	14,891
1987-88	887	9.4	447	4,200	1,395	2,805	5.58	23,435
1988-89	904	9.5	400	3,800	1,348	2,452	6.31	23,994
1989-90	873	8.9	331	2,950	1,118	1,832	5.10	15,046
1990-91	815	8.0	331	2,650	1,186	1,464	6.11	16,203
1991-92	1,050	9.8	265	2,600	1,307	1,293	7.16	18,618
1992-93	1,161	10.5	290	3,050	1,316	1,734	3.31	10,092
1993-94	1,311	11.3	296	3,350	1,097	2,253	2.38	7,976
1994-95	1,458	12.4	254	3,150	1,106	2,044	1.34	4,224
<b>ALL TANGERINES 2/</b>								
1975-76	1,595	18.0	189	3,400	2,362	1,038	3.02	10,251
1976-77	1,559	17.9	184	3,300	2,317	983	3.29	10,855
1977-78	1,488	16.5	194	3,200	1,901	1,299	4.79	15,339
1978-79	1,434	15.9	220	3,500	1,891	1,609	4.99	17,465
1979-80	1,381	15.2	257	3,900	2,339	1,561	4.25	16,594
1980-81	1,331	15.0	200	3,000	1,905	1,095	5.45	16,361
1981-82	1,971	20.6	199	4,100	1,917	2,183	5.91	24,236
1982-83	1,815	18.9	180	3,400	2,170	1,230	7.81	26,556
1983-84	1,287	13.2	225	2,975	1,858	1,117	7.08	21,075
1984-85	1,101	11.3	163	1,840	945	895	13.66	25,127
1985-86	904	8.8	222	1,950	1,189	761	11.55	22,515
1986-87	768	7.5	312	2,340	1,462	878	10.92	25,563
1987-88	796	7.6	322	2,450	1,614	836	12.99	31,831
1988-89	794	7.7	377	2,900	1,639	1,261	12.64	36,652
1989-90	946	8.5	200	1,700	999	701	15.28	25,981
1990-91	1,021	8.7	224	1,950	1,227	723	17.10	33,349
1991-92	1,403	11.3	230	2,600	1,965	635	18.00	46,797
1992-93	1,781	13.7	204	2,800	2,065	735	13.75	38,503
1993-94	2,269	16.4	250	4,100	2,985	1,115	9.83	40,303
1994-95	2,831	20.1	177	3,550	2,662	888	11.51	40,870

1/ 1994-95 preliminary. 2/ Honey tangerines not included prior to 1981-82, Sunburst tangerines not included prior to 1989-90, and Fallglo tangerines not included prior to 1993-94.

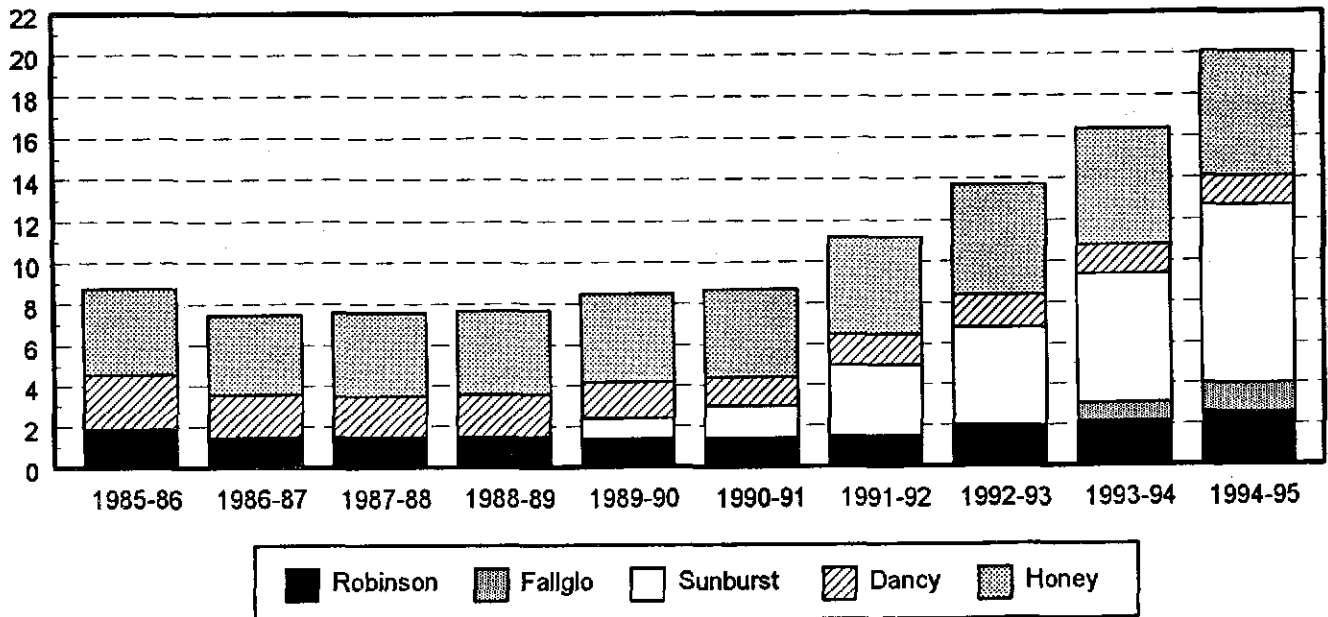
**FLORIDA CITRUS: Acreage, yield, production, utilization, season average price, and value for crop years 1975-76 through 1994-95 1/**

Crop year	Bearing trees	Bearing acreage	Yield per acre	Utilization of production			On-tree	
				Total	Fresh	Processed	Price per box	Value of production
	1,000 trees	1,000 acres	Boxes	1,000 boxes			Dollars	1,000 dollars
<b>LIMES</b>								
1975-76	711	4.4	245	1,080	586	494	6.70	7,235
1976-77	728	4.5	222	1,000	514	486	8.60	8,596
1977-78	617	3.8	121	460	340	120	15.72	7,229
1978-79	682	4.1	176	720	481	239	12.44	8,948
1979-80	777	4.7	234	1,100	622	478	8.18	8,996
1980-81	867	5.3	226	1,200	697	503	6.58	7,891
1981-82	1,021	6.4	203	1,300	625	675	7.88	10,238
1982-83	1,143	7.3	233	1,700	975	725	8.39	14,262
1983-84	1,100	7.0	206	1,440	825	615	7.46	10,736
1984-85	1,070	6.7	245	1,640	1,025	615	7.27	11,927
1985-86	1,068	6.8	254	1,725	880	845	7.94	13,692
1986-87	1,059	6.7	216	1,450	850	600	8.57	12,424
1987-88	1,100	7.0	186	1,300	860	440	12.69	16,493
1988-89	1,036	6.6	189	1,250	950	300	11.29	14,112
1989-90	1,040	6.7	246	1,650	1,010	640	8.26	13,634
1990-91	967	6.2	234	1,450	930	520	13.99	20,289
1991-92	983	6.3	254	1,600	1,070	530	9.12	14,589
1992-93 2/	983	6.3	159	1,000	730	270	1.02	1,017
1993-94	295	1.9	105	200	150	50	12.70	2,541
1994-95	256	1.9	121	230	190	40	8.65	1,989

1/ 1994-95 preliminary. 2/ Hurricane Andrew August 24, 1992.

**FLORIDA TANGERINES: Bearing acreage by variety, 1985-86 through 1994-95**

Thousand acres



**CITRUS FRUITS: Utilization, season average on-tree price, and value by  
types, by states, crop years 1989-90 through 1994-95 1/**

Crop year	Utilization of production			Price per box			Value of production		
	Fresh	Proc	Total	Fresh	Proc	Total	Fresh	Proc	Total
	1,000 boxes			Dollars per box			1,000 dollars		
<b>UNITED STATES ORANGES</b>									
1989-90	54,844	129,571	184,415	8.49	5.25	6.13	463,303	665,323	1,128,626
1990-91	30,069	148,881	178,950	14.84	5.29	6.78	462,185	777,794	1,239,979
1991-92	54,738	154,872	209,610	8.06	4.72	5.52	439,856	706,574	1,146,430
1992-93	61,768	193,992	255,760	6.92	3.03	3.88	433,663	571,835	1,005,498
1993-94	58,015	182,435	240,450	7.67	3.48	4.40	448,181	619,056	1,067,237
1994-95	55,666	212,839	268,505	7.69	2.84	3.75	434,383	589,640	1,024,023
<b>FLORIDA ORANGES</b>									
1989-90	5,922	104,278	110,200	10.31	5.98	6.21	61,053	623,173	684,226
1990-91	12,451	139,149	151,600	8.46	5.66	5.89	105,289	787,386	892,675
1991-92	11,552	128,248	139,800	8.52	5.69	5.93	98,404	730,345	828,749
1992-93	10,724	175,876	186,600	3.81	3.46	3.48	40,877	608,836	649,713
1993-94	9,898	164,502	174,400	5.98	3.98	4.09	59,162	654,150	713,312
1994-95	10,453	194,947	205,400	4.86	3.24	3.32	50,784	631,873	682,657
<b>CALIFORNIA ORANGES</b>									
1989-90	47,100	24,300	71,400	8.22	1.63	5.98	387,375	39,525	426,900
1990-91	16,200	9,400	25,600	20.29	-0.98	12.48	328,740	-9,178	319,562
1991-92	41,350	26,050	67,400	7.96	-0.90	4.53	328,943	-23,432	305,511
1992-93	49,100	17,700	66,800	7.80	-2.05	5.19	382,916	-36,228	346,688
1993-94	46,100	17,500	63,600	8.14	-1.97	5.36	375,179	-34,400	340,779
1994-95	43,500	17,500	61,000	8.62	-2.45	5.45	375,145	-42,845	332,300
<b>TEXAS ORANGES</b>									
1989-90	663	542	1,205	7.92	3.00	5.71	5,251	1,627	6,878
1990-91	--	--	--	--	--	--	--	--	--
1991-92	30	--	30	12.77	--	12.77	383	--	383
1992-93	448	62	510	6.94	1.10	6.23	3,110	68	3,178
1993-94	504	46	550	8.38	1.74	7.82	4,221	80	4,301
1994-95	718	337	1,055	4.02	2.18	3.43	2,886	734	3,620
<b>ARIZONA ORANGES</b>									
1989-90	1,159	451	1,610	8.30	2.21	6.60	9,624	998	10,622
1990-91	1,418	332	1,750	19.86	-1.25	15.85	28,156	-414	27,742
1991-92	1,806	574	2,380	6.71	-0.59	4.95	12,126	-339	11,787
1992-93	1,496	354	1,850	4.52	-2.38	3.20	6,760	-841	5,919
1993-94	1,513	387	1,900	6.36	-2.00	4.66	9,619	-774	8,845
1994-95	995	55	1,050	5.60	-2.22	5.19	5,568	-122	5,446

1/ 1994-95 preliminary.



**CITRUS FRUITS: Utilization, season average on-tree price, and value by types, by states, crop years 1990-91 through 1994-95 1/**

Crop year	Utilization of production			Price per box			Value of production		
	Fresh	Proc	Total	Fresh	Proc	Total	Fresh	Proc	Total
	1,000 boxes			Dollars per box			1,000 dollars		
<b>FLORIDA EARLY AND MIDSEASON ORANGES (INCLUDING NAVELS)</b>									
1990-91	5,966	81,534	87,500	8.30	5.17	5.38	49,518	421,531	471,049
1991-92	7,780	75,620	83,400	9.40	5.03	5.44	73,132	380,369	453,501
1992-93	6,958	107,342	114,300	4.50	3.15	3.23	31,311	338,127	369,438
1993-94	6,838	100,462	107,300	6.75	3.56	3.76	46,157	357,645	403,802
1994-95	6,682	113,018	119,700	4.75	2.51	2.64	31,740	283,675	315,415
<b>FLORIDA NAVELS</b>									
1990-91	2,787	913	3,700	10.70	2.85	8.76	29,821	2,602	32,423
1991-92	2,992	708	3,700	12.40	3.35	10.67	37,101	2,372	39,473
1992-93	3,537	1,263	4,800	6.00	1.62	4.85	21,222	2,046	23,268
1993-94	3,123	977	4,100	9.65	1.69	7.75	30,137	1,651	31,788
1994-95	3,748	2,052	5,800	5.75	0.79	4.00	21,551	1,621	23,172
<b>FLORIDA LATE (VALENCIA) ORANGES</b>									
1990-91	6,485	57,615	64,100	8.60	6.35	6.58	55,771	365,855	421,626
1991-92	3,772	52,628	56,400	6.70	6.65	6.65	25,272	349,976	375,248
1992-93	3,766	68,534	72,300	2.54	3.95	3.88	9,566	270,709	280,275
1993-94	3,060	64,040	67,100	4.25	4.63	4.61	13,005	296,505	309,510
1994-95	3,771	81,929	85,700	5.05	4.25	4.29	19,044	348,198	367,242
<b>CALIFORNIA NAVELS AND MISCELLANEOUS ORANGES</b>									
1990-91	9,200	6,600	15,800	14.90	-0.89	8.30	137,080	-5,874	131,206
1991-92	26,500	8,600	35,100	9.23	-0.31	6.89	244,595	-2,666	241,929
1992-93	32,700	11,100	43,800	6.80	-2.14	4.53	222,360	-23,754	198,606
1993-94	29,100	7,500	36,600	8.19	-1.80	6.14	238,329	-13,500	224,829
1994-95	26,500	8,500	35,000	8.37	-2.33	5.77	221,805	-19,805	202,000
<b>CALIFORNIA VALENCIA ORANGES</b>									
1990-91	7,000	2,800	9,800	27.38	-1.18	19.22	191,660	-3,304	188,356
1991-92	14,850	17,450	32,300	5.68	-1.19	1.97	84,348	-20,766	63,582
1992-93	16,400	6,600	23,000	9.79	-1.89	6.44	160,556	-12,474	148,082
1993-94	17,000	10,000	27,000	8.05	-2.09	4.29	136,850	-20,900	115,950
1994-95	17,000	9,000	26,000	9.02	-2.56	5.01	153,340	-23,040	130,300
<b>FLORIDA TEMPLES</b>									
1990-91	794	1,706	2,500	10.60	4.32	6.31	8,416	7,370	15,786
1991-92	848	1,502	2,350	8.50	5.38	6.51	7,208	8,081	15,289
1992-93	947	1,553	2,500	4.40	2.13	2.99	4,167	3,308	7,475
1993-94	785	1,465	2,250	4.55	1.75	2.73	3,572	2,564	6,136
1994-95	787	1,763	2,550	5.10	1.40	2.54	4,014	2,468	6,482

1/ 1994-95 preliminary.

**CITRUS FRUITS: Utilization, season average on-tree price, and value by types, by states, crop years 1989-90 through 1994-95 1/**

Crop year	Utilization of production			Price per box			Value of production		
	Fresh	Proc	Total	Fresh	Proc	Total	Fresh	Proc	Total
	1,000 boxes			Dollars per box			1,000 dollars		
<b>UNITED STATES GRAPEFRUIT</b>									
1989-90	22,614	26,686	49,300	10.00	2.53	5.86	227,152	63,998	291,150
1990-91	30,815	24,685	55,500	8.74	1.65	5.55	268,479	38,173	306,652
1991-92	31,346	23,919	55,265	8.34	3.44	6.20	258,803	78,136	336,939
1992-93	31,665	36,710	68,375	5.10	0.77	2.75	162,415	25,599	188,014
1993-94	31,869	33,231	65,100	5.63	0.50	2.97	179,341	14,819	194,160
1994-95	32,680	38,370	71,050	4.84	-0.59	1.86	161,112	-23,578	137,534
<b>FLORIDA GRAPEFRUIT</b>									
1989-90	13,344	22,356	35,700	10.00	3.06	5.65	133,413	68,343	201,756
1990-91	23,923	21,177	45,100	8.83	2.08	5.66	211,244	44,084	255,328
1991-92	22,841	19,559	42,400	8.69	4.20	6.62	198,391	82,238	280,629
1992-93	23,154	31,996	55,150	4.86	1.06	2.66	112,476	33,956	146,432
1993-94	22,502	28,548	51,050	5.52	0.71	2.83	124,167	20,149	144,316
1994-95	22,256	33,444	55,700	4.52	-0.54	1.48	100,697	-18,179	82,518
<b>CALIFORNIA GRAPEFRUIT</b>									
1989-90	6,000	3,400	9,400	10.49	-1.13	6.28	63,060	-3,865	59,195
1990-91	5,200	2,800	8,000	8.42	-1.68	4.87	43,682	-4,714	38,968
1991-92	6,400	3,600	10,000	7.40	-0.92	4.39	47,232	-3,312	43,920
1992-93	5,700	3,500	9,200	6.35	-2.13	3.11	35,982	-7,453	28,529
1993-94	6,080	3,220	9,300	6.74	-1.59	3.86	40,994	-5,110	35,884
1994-95	5,910	3,390	9,300	7.47	-1.78	4.10	44,157	-6,025	38,132
<b>TEXAS GRAPEFRUIT</b>									
1989-90	1,605	395	2,000	7.34	0.56	6.00	11,781	221	12,002
1990-91	--	--	--	--	--	--	--	--	--
1991-92	65	--	65	13.52	--	13.52	879	--	879
1992-93	1,397	478	1,875	6.57	0.85	5.11	9,178	406	9,584
1993-94	2,155	845	3,000	5.02	1.02	3.89	10,818	862	11,680
1994-95	3,201	1,449	4,650	3.18	0.54	2.36	10,179	782	10,961
<b>ARIZONA GRAPEFRUIT</b>									
1989-90	1,665	535	2,200	11.35	-1.31	8.27	18,898	-701	18,197
1990-91	1,692	708	2,400	8.01	-1.69	5.15	13,553	-1,197	12,356
1991-92	2,040	760	2,800	6.03	-1.04	4.11	12,301	-790	11,511
1992-93	1,414	736	2,150	3.38	-1.78	1.61	4,779	-1,310	3,469
1993-94	1,132	618	1,750	2.97	-1.75	1.30	3,362	-1,082	2,280
1994-95	1,313	87	1,400	4.63	-1.79	4.23	6,079	-156	5,923

1/ 1994-95 preliminary.

**CITRUS FRUITS: Utilization, season average on-tree price, and value by types, by states, crop years 1990-91 through 1994-95 1/**

Crop year	Utilization of production			Price per box			Value of production		
	Fresh	Proc	Total	Fresh	Proc	Total	Fresh	Proc	Total
	1,000 boxes			Dollars per box			1,000 dollars		
<b>FLORIDA ALL TANGERINES</b>									
1990-91	1,227	723	1,950	25.30	3.19	17.10	31,043	2,306	33,349
1991-92	1,965	635	2,600	22.60	3.76	18.00	44,409	2,388	46,797
1992-93	2,065	735	2,800	18.30	0.97	13.75	37,790	713	38,503
1993-94	2,985	1,115	4,100	13.30	0.54	9.83	39,701	602	40,303
1994-95	2,662	888	3,550	15.80	-1.34	11.51	42,060	-1,190	40,870
<b>FLORIDA EARLY TANGERINES 2/</b>									
1990-91	380	200	580	25.60	1.82	17.40	9,728	364	10,092
1991-92	558	142	700	28.80	2.71	23.51	16,070	385	16,455
1992-93	788	212	1,000	20.20	0.60	16.05	15,918	127	16,045
1993-94	1,491	459	1,950	14.60	0.05	11.18	21,769	23	21,792
1994-95	1,715	525	2,240	10.50	-2.32	7.50	18,008	-1,218	16,790
<b>FLORIDA DANCY TANGERINES</b>									
1990-91	149	121	270	21.00	1.72	12.36	3,129	208	3,337
1991-92	442	188	630	16.80	3.18	12.74	7,426	598	8,024
1992-93	303	97	400	13.10	0.78	10.11	3,969	76	4,045
1993-94	224	196	420	5.90	-0.20	3.05	1,322	-39	1,283
1994-95	79	31	110	15.90	-2.02	10.85	1,256	-63	1,193
<b>FLORIDA HONEY TANGERINES</b>									
1990-91	698	402	1,100	26.00	4.31	18.07	18,148	1,733	19,881
1991-92	965	305	1,270	21.70	4.60	17.59	20,941	1,403	22,344
1992-93	974	426	1,400	18.40	1.20	13.17	17,922	511	18,433
1993-94	1,270	460	1,730	13.00	1.35	9.90	16,510	621	17,131
1994-95	868	332	1,200	26.60	0.28	19.32	23,089	93	23,182
<b>CALIFORNIA TANGERINES</b>									
1990-91	925	425	1,350	23.68	-1.78	15.67	21,904	-756	21,148
1991-92	1,680	760	2,440	18.58	-0.97	12.49	31,214	-737	30,477
1992-93	1,465	635	2,100	15.39	-2.59	9.95	22,546	-1,645	20,901
1993-94	1,600	700	2,300	14.05	-2.14	9.12	22,480	-1,498	20,982
1994-95	1,500	700	2,200	18.22	-2.35	11.68	27,330	-1,645	25,685
<b>ARIZONA TANGERINES</b>									
1990-91	497	103	600	20.18	-1.78	16.41	10,029	-183	9,846
1991-92	880	320	1,200	14.78	-1.02	10.57	13,006	-326	12,680
1992-93	702	248	950	15.19	-2.59	10.55	10,663	-642	10,021
1993-94	808	192	1,000	11.95	-2.36	9.20	9,656	-453	9,203
1994-95	582	68	650	16.12	-2.28	14.20	9,382	-155	9,227

1/ 1994-95 preliminary. 2/ Sunburst variety included with Robinsons beginning in 1989-90; Fallglo variety included in 1993-94.

**OTHER CITRUS, LIMES AND LEMONS:** Utilization, season average on-tree price, and value by types, by states, crop years 1990-91 through 1994-95 1/

Crop year	Utilization of production			Price per box			Value of production		
	Fresh	Proc	Total	Fresh	Proc	Total	Fresh	Proc	Total
	1,000 boxes			Dollars per box			1,000 dollars		
<b>FLORIDA TANGELOS</b>									
1990-91	1,186	1,464	2,650	9.70	3.21	6.11	11,504	4,699	16,203
1991-92	1,307	1,293	2,600	9.20	5.10	7.16	12,024	6,594	18,618
1992-93	1,316	1,734	3,050	5.60	1.57	3.31	7,370	2,722	10,092
1993-94	1,097	2,253	3,350	6.10	0.57	2.38	6,692	1,284	7,976
1994-95	1,106	2,044	3,150	5.15	-0.72	1.34	5,696	-1,472	4,224
<b>FLORIDA K-EARLY CITRUS</b>									
1990-91	111	49	160	7.40	-0.45	4.99	821	-22	799
1991-92	113	52	165	4.30	0.05	2.96	486	3	489
1992-93	133	52	185	7.80	-0.42	5.49	1,037	-22	1,015
1993-94	160	50	210	2.70	-1.10	1.80	432	-55	377
1994-95	65	55	120	3.95	-1.40	1.50	257	-77	180
<b>FLORIDA LIMES</b>									
1990-91	930	520	1,450	22.52	-1.26	13.99	20,944	-655	20,289
1991-92	1,070	530	1,600	14.08	-0.90	9.12	15,066	-477	14,589
1992-93	730	270	1,000	2.20	-2.18	1.02	1,606	-589	1,017
1993-94	150	50	200	17.40	-1.39	12.70	2,610	-70	2,540
1994-95	190	40	230	11.10	-3.00	8.65	2,109	-120	1,989
<b>CALIFORNIA LEMONS</b>									
1990-91	9,390	5,410	14,800	21.00	-0.75	13.05	197,190	-4,058	193,132
1991-92	9,090	6,010	15,100	16.25	-1.86	9.04	147,713	-11,179	136,534
1992-93	9,900	10,500	20,400	14.91	-1.58	6.42	147,609	-16,590	131,019
1993-94	9,500	11,200	20,700	16.39	-2.46	6.19	155,705	-27,552	128,153
1994-95	10,980	9,520	20,500	16.09	-2.78	7.33	176,668	-26,466	150,202
<b>ARIZONA LEMONS</b>									
1990-91	2,410	1,690	4,100	14.40	-0.60	8.22	34,704	-1,014	33,690
1991-92	2,958	2,142	5,100	17.55	-1.84	9.41	51,913	-3,941	47,972
1992-93	2,613	1,787	4,400	9.31	-1.55	4.90	24,327	-2,770	21,557
1993-94	2,951	2,249	5,200	12.44	-2.17	6.12	36,710	-4,880	31,830
1994-95	2,413	1,187	3,600	11.34	-2.52	6.77	27,363	-2,991	24,372

1/ 1994-95 preliminary.

**FLORIDA LEMONS:** Bearing acreage, production, and season average on-tree prices for crop years 1990 through 1994

Crop year 1/	True lemons		Meyer lemons		All lemons			
	Bearing acres	Production	Bearing acres	Production	Bearing acres	Production	Price per box	Value of production
	1,000 acres	1,000 boxes	1,000 acres	1,000 boxes	1,000 acres	1,000 boxes	Dollars	1,000 dollars
1990	0.9	210	0.1	40	1.0	250	6.80	1,697
1991	0.8	254	0.1	46	0.9	300	12.60	3,784
1992	0.6	215	0.1	40	0.7	255	6.15	1,565
1993	0.6	167	0.1	33	0.7	200	10.00	1,998
1994	0.6	188	0.1	32	0.7	220	7.60	1,677

1/ Crop year corresponds to calendar year.

**FLORIDA GRAPEFRUIT: Production by types, by areas of production,  
crop years 1985-86 through 1994-95**

Crop year	White seedless			Colored seedless			Seedy		
	State	Interior	Indian River	State	Interior	Indian River	State	Interior	Indian River
1,000 boxes									
1985-86	25,600	10,700	14,900	18,000	5,500	12,500	3,150	2,950	200
1986-87	26,900	10,300	16,600	20,000	5,100	14,900	2,900	2,800	100
1987-88	29,200	11,700	17,500	21,900	6,200	15,700	2,750	2,650	100
1988-89	27,700	11,400	16,300	23,700	6,700	17,000	3,350	3,250	100
1989-90	18,000	5,000	13,000	16,300	3,300	13,000	1,400	1,300	100
1990-91	21,700	6,700	15,000	21,800	5,100	16,700	1,600	1,500	100
1991-92	19,100	7,200	11,900	22,100	5,800	16,300	1,200	1,100	100
1992-93	25,700	10,200	15,500	27,700	8,700	19,000	1,750	1,650	100
1993-94	24,500	9,900	14,600	25,500	9,600	15,900	1,050	1,000	50
1994-95	25,700	8,700	17,000	28,700	8,200	20,500	1,300	1,200	100

**FLORIDA GRAPEFRUIT: Season average on-tree prices per box, by utilization  
of sales and areas of production, by types, crop years  
1989-90 through 1994-95 1/**

Crop year and area	White seedless			Colored seedless		
	Fresh	Processing	All sales	Fresh	Processing	All sales
Dollars						
1989-90						
Interior	6.60	3.70	4.20	9.20	1.66	8.09
Indian River	12.00	3.49	5.58	9.80	1.94	5.85
State average	10.91	3.55	5.21	9.60	1.92	6.30
1990-91						
Interior	6.20	2.17	3.19	9.30	1.37	8.43
Indian River	9.10	2.16	5.08	8.80	1.42	6.41
State average	8.60	2.16	4.59	8.95	1.42	6.85
1991-92						
Interior	7.10	4.39	4.74	7.80	3.62	6.85
Indian River	10.70	4.44	7.51	8.20	3.74	6.91
State average	10.20	4.41	6.46	8.05	3.71	6.87
1992-93						
Interior	3.70	1.27	1.54	4.50	0.55	3.26
Indian River	5.70	1.26	2.68	4.80	0.56	3.04
State average	5.30	1.26	2.22	4.70	0.56	3.11
1993-94						
Interior	3.25	1.47	1.77	4.15	0.02	2.48
Indian River	8.75	0.90	3.49	4.65	-0.58	2.81
State average	7.55	1.16	2.84	4.70	-0.28	2.85
1994-95						
Interior	3.55	0.83	1.18	3.45	-1.44	1.62
Indian River	8.70	-0.33	2.11	3.40	-1.96	1.02
State average	7.63	0.11	1.78	3.45	-1.83	1.21

1/ 1994-95 preliminary.

**FLORIDA CITRUS PRODUCTS: Annual packs of citrus and all citrus feeds,  
crop years 1980-81 through 1994-95**

Crop year	Oranges 1/							All citrus	
	Concentrated juice 2/		Chilled juice		Canned juice 3/		Canned sections	Feed	Molasses
	Product	Boxes used	Product	Boxes used	Product	Boxes used	Product		
	1,000 gallons	1,000 boxes	1,000 gallons	1,000 boxes	1,000 cases 4/	1,000 boxes	1,000 cases 4/	1,000 tons	
1980-81	174,537	144,322	95,700	19,640	13,012	5,994	19	988	35
1981-82	133,294	104,355	84,597	16,293	11,503	4,058	14	724	23
1982-83	169,577	114,343	104,256	18,084	9,802	2,190	35	710	26
1983-84	121,216	94,016	92,814	16,981	9,084	2,269	NA	640	36
1984-85	118,472	86,112	81,445	14,903	7,425	1,185	NA	580	35
1985-86	132,406	96,061	NA	NA	7,596	1,361	NA	610	37
1986-87	145,056	96,182	NA	NA	8,122	947	NA	601	28
1987-88	169,973	110,206	NA	NA	7,256	904	NA	697	30
1988-89	174,717	113,729	NA	NA	8,164	1,141	NA	770	24
1989-90	90,285	73,640	NA	NA	6,640	660	NA	598	28
1990-91	151,396	104,136	NA	NA	7,130	569	NA	701	27
1991-92	145,421	93,932	NA	NA	7,652	456	NA	637	24
1992-93	208,662	132,154	NA	NA	7,922	355	NA	874	31
1993-94	182,231	116,248	NA	51,015	6,849	225	NA	832	25
1994-95	216,502	144,678	NA	53,410	5,744	289	NA	941	26

Crop year	Concentrated juice				Canned products				
	Grapefruit		Tangerines	Blended	Grapefruit		Tangerine juice	Blended juice	Citrus salad
	Product	Boxes used	Product	Product	Juice	Segments			
	1,000 gallons	1,000 boxes	1,000 gallons		1,000 cases 4/				
1980-81	20,763	19,490	1,175	3	14,231	1,671	9	984	79
1981-82	21,869	20,052	924	18	15,725	1,344	6	727	69
1982-83	14,483	13,977	334	1	11,651	1,235	4	650	94
1983-84	19,291	18,728	636	0	9,513	NA	0	555	NA
1984-85	24,802	22,996	285	0	10,552	NA	1	615	NA
1985-86	24,162	21,572	368	0	9,948	NA	0	577	NA
1986-87	28,875	24,143	373	0	8,982	NA	0	533	NA
1987-88	31,906	26,690	583	0	7,724	NA	0	449	NA
1988-89	32,466	26,621	495	10	7,956	NA	0	434	NA
1989-90	21,774	19,405	371	0	5,986	NA	0	334	NA
1990-91	21,672	17,413	279	0	6,678	NA	0	450	NA
1991-92	19,458	16,099	297	5	5,822	NA	0	309	NA
1992-93	31,527	26,595	329	0	5,751	NA	0	197	NA
1993-94	26,485	22,324	529	0	5,375	NA	0	199	NA
1994-95	31,344	27,343	1,192	0	5,240	NA	0	161	NA

1/ Includes tangelos, Temples, tangerines, and K-Early Citrus. 2/ 43.4 degrees Brix, 1980-81; 42.0 degrees Brix, 1981-82 and later seasons. 3/ Includes sections and salads, cannery juice, and blend. 4/ Equiv. cases, 24 No. 2 cans.

SOURCE: See Page 45, Data Sources, Item 3

**FLORIDA CITRUS: Monthly and season average on-tree price per  
box for crop years 1990-91 through 1994-95 1/**

Crop year	Oct	Nov	Dec	Jan	Feb	Mar	Season average
-----------	-----	-----	-----	-----	-----	-----	----------------

Dollars

**EARLY (INCLUDING NAVELS) AND MIDSEASON ORANGES**

**ALL METHODS OF SALE**

1990-91	5.70	5.23	5.27	5.51	5.59	--	5.38
1991-92	8.47	5.24	5.18	5.40	5.74	--	5.44
1992-93	--	3.56	3.33	3.13	3.04	3.49	3.23
1993-94	--	4.83	3.58	3.61	3.72	4.00	3.76
1994-95	3.04	2.12	2.59	2.83	3.06	--	2.64

**SALES FOR FRESH USE**

1990-91	7.10	6.70	8.80	11.00	10.20	--	8.30
1991-92	11.60	9.40	8.70	6.90	7.60	--	9.40
1992-93	--	5.70	4.80	2.55	2.80	1.50	4.50
1993-94	--	9.45	6.05	3.45	3.15	3.55	6.75
1994-95	6.45	4.45	4.65	3.85	4.05	--	4.75

**SALES FOR PROCESSING**

1990-91	5.40	5.11	4.96	5.30	5.52	--	5.17
1991-92	3.90	4.40	4.90	5.35	5.70	--	5.03
1992-93	--	3.00	3.20	3.15	3.05	3.50	3.15
1993-94	--	3.03	3.38	3.61	3.74	4.00	3.56
1994-95	1.40	1.95	2.45	2.80	3.05	--	2.51

Crop year	Jan	Feb	Mar	Apr	May	Jun	Season average
-----------	-----	-----	-----	-----	-----	-----	----------------

Dollars

**LATE (VALENCIA) ORANGES**

**ALL METHODS OF SALE**

1990-91	--	6.37	6.45	6.63	6.76	--	6.58
1991-92	--	6.09	6.24	6.62	7.00	7.66	6.65
1992-93	--	--	3.31	3.98	4.01	4.00	3.88
1993-94	--	--	3.99	4.57	4.72	4.82	4.61
1994-95	--	3.33	4.04	4.41	4.62	4.36	4.29

**SALES FOR FRESH USE**

1990-91	--	8.60	8.40	8.40	9.10	--	8.60
1991-92	--	7.10	6.10	6.10	7.10	10.60	6.70
1992-93	--	--	1.80	2.20	2.90	5.10	2.54
1993-94	--	--	3.95	3.85	3.85	5.75	4.25
1994-95	--	5.05	4.95	4.75	5.15	5.85	5.05

**SALES FOR PROCESSING**

1990-91	--	5.53	6.27	6.48	6.50	--	6.35
1991-92	--	5.70	6.25	6.65	7.00	7.40	6.65
1992-93	--	--	3.50	4.05	4.05	3.95	3.95
1993-94	--	--	4.00	4.59	4.75	4.77	4.63
1994-95	--	3.05	4.00	4.40	4.60	4.30	4.25

1/ 1994-95 preliminary.

**FLORIDA CITRUS: Monthly and season average on-tree price per box  
for crop years 1990-91 through 1994-95 1/**

Crop year	Sep	Oct	Nov	Dec	Jan	Feb	Mar	Apr	May	Jun	Season average
Dollars											
<b>WHITE SEEDLESS GRAPEFRUIT</b>											
<b>ALL METHODS OF SALE</b>											
1990-91	6.50	5.53	5.55	3.93	4.53	4.00	4.95	5.23	3.47	--	4.59
1991-92	--	6.63	6.26	5.61	6.00	6.18	7.25	8.02	--	--	6.46
1992-93	--	4.79	3.85	3.25	2.09	2.64	1.63	2.04	1.46	--	2.22
1993-94	--	6.11	4.87	3.40	3.46	2.93	2.50	2.45	1.23	--	2.84
1994-95	--	5.08	2.61	1.61	2.15	1.68	1.40	1.04	--	--	1.78
<b>SALES FOR FRESH USE</b>											
1990-91	8.00	8.00	9.30	7.00	8.60	8.50	9.30	9.50	6.80	--	8.60
1991-92	--	8.70	8.90	9.00	9.60	10.90	11.60	11.40	--	--	10.20
1992-93	--	6.20	6.30	6.20	3.00	5.60	5.10	6.00	2.50	--	5.30
1993-94	--	8.75	8.75	6.95	7.25	7.25	7.35	7.85	1.85	--	7.55
1994-95	--	8.93	6.73	7.13	8.03	7.43	7.53	7.13	--	--	7.63
<b>SALES FOR PROCESSING</b>											
1990-91	1.55	1.87	2.18	2.20	2.15	2.39	2.38	1.71	1.19	--	2.16
1991-92	--	2.30	3.60	3.95	4.30	4.60	4.80	5.20	--	--	4.41
1992-93	--	0.97	1.46	1.76	1.67	1.20	1.16	1.16	1.35	--	1.26
1993-94	--	0.05	0.05	0.45	1.03	1.17	1.27	1.24	1.19	--	1.16
1994-95	--	-1.45	-1.00	-0.55	-0.05	0.30	0.30	-0.05	--	--	0.11
Crop year	Sep	Oct	Nov	Dec	Jan	Feb	Mar	Apr	May	Jun	Season average
Dollars											
<b>COLORED SEEDLESS GRAPEFRUIT</b>											
<b>ALL METHODS OF SALE</b>											
1990-91	8.21	7.94	6.79	6.12	6.99	6.37	6.92	6.83	6.36	--	6.85
1991-92	9.19	6.77	6.88	6.48	6.18	6.40	7.33	8.22	--	--	6.87
1992-93	--	6.85	4.43	4.04	3.40	2.80	2.14	2.22	1.68	1.50	3.11
1993-94	--	7.92	4.38	3.32	2.54	2.20	2.36	1.64	0.80	1.09	2.85
1994-95	7.20	4.07	1.46	1.07	0.82	0.71	0.32	0.27	0.22	--	1.21
<b>SALES FOR FRESH USE</b>											
1990-91	9.35	9.25	8.15	7.55	9.35	8.95	10.25	9.75	8.45	--	8.95
1991-92	10.15	7.65	7.85	7.45	7.25	7.85	8.85	9.55	--	--	8.05
1992-93	--	7.80	5.20	5.10	4.50	4.10	3.70	3.80	3.30	3.00	4.70
1993-94	--	9.70	5.70	4.80	4.00	3.80	4.40	3.50	2.00	2.10	4.70
1994-95	8.65	6.15	3.05	2.75	2.85	2.85	2.45	2.65	2.75	--	3.45
<b>SALES FOR PROCESSING</b>											
1990-91	1.10	1.14	1.41	1.61	1.42	1.40	1.43	1.24	1.78	--	1.42
1991-92	2.05	2.05	2.70	3.20	3.80	4.15	4.25	4.60	--	--	3.71
1992-93	--	0.69	0.69	0.71	0.61	0.44	0.41	0.52	0.69	0.55	0.56
1993-94	--	-0.60	-0.50	-0.38	-0.26	-0.15	-0.17	-0.19	-0.51	-0.47	-0.28
1994-95	-2.31	-2.21	-2.11	-2.06	-1.91	-1.71	-1.71	-1.61	-1.81	--	-1.83

1/ 1994-95 preliminary.



**FLORIDA CITRUS: Monthly and season average on-tree price per box for  
crop years 1990-91 through 1994-95 1/**

Crop year	Apr	May	Jun	Jul	Aug	Sep	
							Dollars
<b>LIMES</b>							
<b>ALL METHODS OF SALE</b>							
1990-91	41.50	28.50	3.01	1.47	8.54	9.20	
1991-92	39.50	6.76	-0.24	1.49	6.40	12.57	
1992-93	6.87	1.57	-1.97	0.81	2.22	2.81	
1993-94	--	--	5.92	9.40	14.43	11.31	
1994-95	24.80	4.80	3.35	5.60	10.35	14.95	
<b>SALES FOR FRESH USE</b>							
1990-91	41.50	28.50	4.40	2.40	16.90	19.90	
1991-92	39.50	7.90	-0.10	3.90	10.90	16.90	
1992-93	8.60	2.60	-1.40	1.60	3.10	3.60	
1993-94	--	--	8.40	13.40	19.40	15.40	
1994-95	24.80	4.80	4.80	7.80	14.80	18.80	
<b>SALES FOR PROCESSING</b>							
1990-91	--	--	0.55	-0.40	-0.90	-0.90	
1991-92	--	-2.60	-0.40	-0.40	-0.40	-2.60	
1992-93	-2.80	-2.80	-2.80	-1.30	-1.30	-1.30	
1993-94	--	--	-2.00	-1.00	-0.50	-0.50	
1994-95	--	--	-3.00	-3.00	-3.00	-3.00	

Crop year	Oct	Nov	Dec	Jan	Feb	Mar	Season average
							Dollars
<b>LIMES</b>							
<b>ALL METHODS OF SALE</b>							
1990-91	12.55	11.53	20.35	21.05	31.69	40.69	13.99
1991-92	14.23	14.65	18.84	17.92	25.35	23.50	9.12
1992-93	--	--	--	--	--	--	1.02
1993-94	11.22	14.05	17.05	17.05	17.05	18.32	12.70
1994-95	10.31	11.48	10.01	10.80	11.80	24.80	8.65
<b>SALES FOR FRESH USE</b>							
1990-91	23.90	24.90	32.90	32.90	44.90	55.90	22.52
1991-92	18.90	17.90	23.90	21.90	33.90	23.50	14.08
1992-93	--	--	--	--	--	--	2.20
1993-94	15.40	19.40	23.40	23.40	23.40	23.40	17.40
1994-95	12.80	12.80	12.80	10.80	11.80	24.80	11.10
<b>SALES FOR PROCESSING</b>							
1990-91	-2.65	-2.65	-2.65	-2.65	-2.65	-2.65	-1.26
1991-92	-2.60	-2.60	-2.60	-2.60	-2.60	--	-0.90
1992-93	--	--	--	--	--	--	-2.18
1993-94	-2.00	-2.00	-2.00	-2.00	-2.00	-2.00	-1.39
1994-95	-3.00	-3.00	-3.00	--	--	--	-3.00

1/ 1994-95 preliminary.

**FLORIDA CITRUS: Monthly and season average on-tree price per  
box for crop years 1990-91 through 1994-95 1/**

Crop year	Oct	Nov	Dec	Jan	Feb	Season average
<b>TANGELOS</b>						
Dollars						
<b>ALL METHODS OF SALE</b>						
1990-91	6.33	5.87	6.37	6.15	4.87	6.11
1991-92	8.01	7.85	6.93	6.59	--	7.16
1992-93	--	4.60	3.92	2.67	1.14	3.31
1993-94	--	4.44	2.99	1.81	1.36	2.38
1994-95	2.14	1.74	1.10	1.36	0.64	1.34
<b>SALES FOR FRESH USE</b>						
1990-91	10.50	8.70	9.50	11.50	10.00	9.70
1991-92	11.70	9.40	8.50	10.10	--	9.20
1992-93	--	6.50	5.30	5.50	2.50	5.60
1993-94	--	7.00	5.20	6.50	10.40	6.10
1994-95	6.15	4.85	4.05	8.35	15.35	5.15
<b>SALES FOR PROCESSING</b>						
1990-91	2.80	3.05	3.25	3.30	3.60	3.21
1991-92	3.45	4.95	5.15	5.35	--	5.10
1992-93	--	1.85	1.85	1.55	1.05	1.57
1993-94	--	0.20	0.50	0.60	0.65	0.57
1994-95	-1.40	-1.10	-1.10	-0.20	-0.20	-0.72

Crop year	Sep	Oct	Nov	Dec	Season average	Dec	Jan	Feb	Mar	Apr	Season average
<b>K-EARLY CITRUS FRUIT</b>						<b>TEMPLES</b>					
Dollars						Dollars					
<b>ALL METHODS OF SALE</b>						<b>ALL METHODS OF SALE</b>					
1990-91	5.79	3.89	4.79	--	4.99	8.64	8.75	5.32	5.70	--	6.31
1991-92	4.39	3.27	0.29	--	2.96	--	6.67	6.23	7.42	--	6.51
1992-93	7.60	6.21	0.55	--	5.49	--	4.36	2.44	2.43	--	2.99
1993-94	--	3.46	0.52	-1.10	1.80	--	4.40	2.22	2.11	2.33	2.73
1994-95	6.35	2.16	-1.40	--	1.50	3.99	2.78	2.22	2.44	--	2.54
<b>SALES FOR FRESH USE</b>						<b>SALES FOR FRESH USE</b>					
1990-91	8.00	6.50	6.50	--	7.40	13.30	12.60	8.10	10.10	--	10.60
1991-92	5.50	4.10	1.00	--	4.30	--	8.30	8.20	11.40	--	8.50
1992-93	8.50	8.50	1.50	--	7.80	--	6.10	2.90	3.50	--	4.40
1993-94	--	4.30	1.10	--	2.70	--	5.95	2.85	3.95	4.45	4.55
1994-95	7.05	3.35	--	--	3.95	6.90	5.40	4.30	4.90	--	5.10
<b>SALES FOR PROCESSING</b>						<b>SALES FOR PROCESSING</b>					
1990-91	-0.55	-0.35	-0.35	--	-0.45	3.05	3.45	4.40	4.65	--	4.32
1991-92	-0.05	-0.05	0.15	--	0.05	--	4.65	5.55	5.95	--	5.38
1992-93	-0.65	-0.35	-0.65	--	-0.42	--	2.05	2.15	2.15	--	2.13
1993-94	--	-1.10	-1.10	-1.10	-1.10	--	1.10	1.80	1.85	2.00	1.75
1994-95	-1.40	-1.40	-1.40	--	-1.40	0.60	1.10	1.60	1.60	--	1.40

1/ 1994-95 preliminary.

**FLORIDA CITRUS: Monthly and season average on-tree price per box  
for crop years 1990-91 through 1994-95 1/**

Crop year	Sep	Oct	Nov	Dec	Jan	Season average	Dec	Jan	Feb	Mar	Apr	Season average
Dollars							Dollars					
<b>EARLY TANGERINES 2/</b>							<b>HONEY TANGERINES</b>					
ALL METHODS OF SALE							ALL METHODS OF SALE					
1990-91	20.40	19.03	16.43	8.61	7.60	17.40	17.29	19.70	16.44	19.44	--	18.07
1991-92	27.29	23.17	24.43	20.07	3.00	23.51	28.63	18.81	15.00	19.27	--	17.59
1992-93	--	13.51	18.66	14.29	--	16.05	--	15.98	9.40	13.51	17.56	13.17
1993-94	--	24.77	15.07	7.71	5.24	11.18	--	12.84	7.37	8.51	15.88	9.90
1994-95	19.83	8.10	7.07	11.77	--	7.50	--	19.08	19.27	19.53	22.28	19.32
SALES FOR FRESH USE							SALES FOR FRESH USE					
1990-91	29.10	25.70	24.70	21.10	21.10	25.60	35.60	27.10	22.10	26.10	--	26.00
1991-92	29.10	29.70	28.60	26.10	--	28.80	34.10	23.10	18.60	23.60	--	21.70
1992-93	--	18.10	22.70	18.10	--	20.20	--	22.10	13.10	19.10	25.10	18.40
1993-94	--	30.20	19.20	9.70	8.70	14.60	--	16.70	9.70	11.20	20.20	13.00
1994-95	21.30	9.80	8.70	14.80	--	10.50	--	26.80	25.80	26.80	30.80	26.60
SALES FOR PROCESSING							SALES FOR PROCESSING					
1990-91	0.50	1.81	2.08	2.10	2.20	1.82	3.55	4.10	4.65	5.40	--	4.31
1991-92	2.00	2.00	3.00	4.00	3.00	2.71	4.00	4.10	4.50	5.50	--	4.60
1992-93	--	-0.25	0.95	0.85	--	0.45	--	1.30	0.90	1.40	1.60	1.20
1993-94	--	0.00	0.00	0.00	0.20	0.05	--	-0.40	0.70	2.30	2.25	1.35
1994-95	-3.00	-3.00	-2.10	-2.00	--	-2.32	--	0.20	0.20	0.50	0.50	0.28

Crop year	Oct	Nov	Dec	Jan	Feb	Mar	Season average
Dollars							
<b>DANCY TANGERINES</b>							
ALL METHODS OF SALE							
1990-91	16.58	12.61	11.06	10.24	16.38	--	12.36
1991-92	--	20.03	13.36	8.25	--	--	12.74
1992-93	--	12.06	10.41	8.97	--	--	10.11
1993-94	--	--	3.70	3.26	1.20	0.10	3.05
1994-95	--	14.54	11.40	8.36	6.10	--	10.85
SALES FOR FRESH USE							
1990-91	22.10	20.40	22.20	21.10	21.10	--	21.00
1991-92	--	23.10	17.10	12.10	--	--	16.80
1992-93	--	14.10	13.10	13.10	--	--	13.10
1993-94	--	--	5.20	6.20	5.20	--	5.90
1994-95	--	18.80	16.80	12.80	8.80	--	15.90
SALES FOR PROCESSING							
1990-91	0.00	1.60	2.00	2.10	2.20	--	1.72
1991-92	--	3.00	3.00	3.50	--	--	3.18
1992-93	--	-0.20	0.85	0.70	--	--	0.78
1993-94	--	--	-1.40	-0.15	0.10	0.10	-0.20
1994-95	--	-2.50	-2.00	-2.00	-2.00	--	-2.02

1/ 1994-95 preliminary. 2/ Sunburst variety included with Robinsons beginning in 1989-90; Fallglo variety included in 1993-94.

**FLORIDA CITRUS: Production by counties, areas  
and types, 1994-95 season**

County and area	Round oranges			Grapefruit			Spe- cialty fruit	All citrus 1/	
	Early and mid	Late (Valencia)	All	Seedless		Seedy			All
				White	Colored				
1,000 boxes									
<b>County:</b>									
Brevard	1,152	922	2,074	301	463	13	777	60	2,911
Charlotte	2,142	1,849	3,991	174	442	6	622	171	4,784
Collier	4,575	4,956	9,531	390	804	25	1,219	213	10,963
DeSoto	13,646	10,033	23,679	304	181	89	574	429	24,682
Glades	1,990	941	2,931	26	88	--	114	32	3,077
Hardee	15,824	4,683	20,507	205	214	31	450	479	21,436
Hendry	13,255	13,252	26,507	1,616	2,282	46	3,944	867	31,318
Highlands	7,749	11,311	19,060	1,140	498	272	1,910	1,256	22,226
Hillsborough	8,090	2,097	10,187	227	217	41	485	255	10,927
Indian River	3,621	3,113	6,734	7,449	7,105	28	14,582	371	21,687
Lake	3,017	620	3,637	73	170	16	259	887	4,783
Lee	1,705	1,625	3,330	98	170	7	275	51	3,656
Manatee	5,430	2,436	7,866	292	342	150	784	235	8,885
Martin	5,541	7,062	12,603	1,872	518	--	2,390	356	15,349
Okeechobee	1,832	813	2,645	330	150	4	484	72	3,201
Orange	1,609	684	2,293	13	34	11	58	257	2,608
Osceola	3,276	1,379	4,655	269	319	15	603	274	5,532
Palm Beach	1,654	966	2,620	651	560	--	1,211	356	4,187
Pasco	2,448	532	2,980	34	36	6	76	101	3,157
Polk	14,748	10,206	24,954	1,941	1,693	473	4,107	1,559	30,620
St. Lucie	5,205	5,820	11,025	8,130	12,249	57	20,436	928	32,389
Sarasota	337	221	558	119	100	3	222	59	839
Seminole	187	53	240	--	2	--	2	32	274
Volusia	196	61	257	34	39	2	75	9	341
Other 2/	471	65	536	12	24	5	41	61	638
<b>State total</b>	<b>119,700</b>	<b>85,700</b>	<b>205,400</b>	<b>25,700</b>	<b>28,700</b>	<b>1,300</b>	<b>55,700</b>	<b>9,370</b>	<b>270,470</b>
<b>Area:</b>									
Indian River District	10,700	11,200	21,900	17,000	20,500	100	37,600	1,454	60,954
Northern	7,813	1,910	9,723	122	257	33	412	1,334	11,469
Central	25,473	22,829	48,302	3,305	2,492	760	6,557	3,058	57,917
Western	43,349	19,493	62,842	1,157	1,059	319	2,535	1,465	66,842
Southern	32,365	30,268	62,633	4,116	4,392	88	8,596	2,059	73,288
<b>State total</b>	<b>119,700</b>	<b>85,700</b>	<b>205,400</b>	<b>25,700</b>	<b>28,700</b>	<b>1,300</b>	<b>55,700</b>	<b>9,370</b>	<b>270,470</b>

1/ Excludes limes and lemons. 2/ Broward, Citrus, Hernando, Marion, Pinellas, and Putnam counties.

**FLORIDA CITRUS: Total acreage by counties and types  
of fruit as of January 1994**

County	Round oranges			Grapefruit				Specialty fruit 2/	All citrus
	Early and mid	Late (Valencia)	All 1/	Seedless		Seedy	All 1/		
				White	Colored				
Acres									
Brevard	5,115	3,413	8,644	634	1,486	41	2,251	768	11,663
Broward	47	110	205	3	22	2	31	10	246
Charlotte	6,619	7,895	14,781	413	3,211	28	3,655	1,559	19,995
Citrus	170	13	194	0	24	0	25	14	233
Collier	14,305	16,738	31,043	886	3,171	108	4,165	1,326	36,534
Dade 3/	0	0	0	0	0	0	0	2,618	2,618
DeSoto	28,985	29,333	58,734	434	570	448	1,495	2,178	62,407
Glades	5,250	3,336	8,690	62	257	0	341	239	9,270
Hardee	35,273	14,166	50,378	283	588	161	1,112	2,721	54,211
Hendry	34,012	46,273	83,463	3,008	6,820	174	10,528	4,613	98,604
Hernando	919	14	1,023	1	23	0	25	61	1,109
Highlands	23,451	39,997	64,318	2,365	1,287	854	4,735	4,982	74,035
Hillsborough	18,100	6,016	25,397	305	502	216	1,058	1,284	27,739
Indian River	15,404	13,604	29,837	16,750	18,079	85	37,036	2,367	69,240
Lake	11,822	2,181	15,865	131	883	52	1,224	3,954	21,053
Lee	4,422	5,444	9,903	298	927	35	1,260	1,075	12,238
Manatee	13,261	7,442	20,756	543	833	692	2,058	1,116	23,940
Marion	836	25	884	0	50	0	52	202	1,138
Martin	15,045	24,316	40,780	4,116	1,543	1	5,847	1,594	48,221
Okeechobee	5,856	3,237	9,129	862	755	18	1,686	455	11,270
Orange	5,807	2,600	8,683	30	221	41	308	1,411	10,402
Osceola	8,745	4,134	13,067	805	710	40	1,563	1,024	15,654
Palm Beach	4,334	3,086	7,612	1,218	1,426	2	2,751	2,522	12,885
Pasco	8,702	1,597	10,655	71	214	18	314	586	11,555
Pinellas	82	68	162	17	16	24	58	28	248
Polk	43,529	36,347	85,354	3,794	3,383	1,633	9,562	9,091	104,007
Putnam	73	12	93	0	0	0	0	29	122
St. Lucie	20,634	27,946	49,587	19,079	32,939	189	53,053	5,808	108,448
Sarasota	872	895	1,767	140	339	10	489	260	2,516
Seminole	929	200	1,179	0	30	1	32	251	1,462
Volusia	874	266	1,153	72	113	6	191	109	1,453
Other 4/	34	0	34	0	0	0	0	142	176
<b>State total</b>	<b>333,507</b>	<b>300,704</b>	<b>653,370</b>	<b>56,320</b>	<b>80,422</b>	<b>4,879</b>	<b>146,915</b>	<b>54,407</b>	<b>854,692</b>

1/ Includes unidentified variety acreage. 2/ Includes limes and lemons. 3/ Surveyed as of October 1994. 4/ Flagler and Sumter counties.

**FLORIDA CITRUS: Total trees by counties and types  
of fruit as of January 1994**

County	Round oranges			Grapefruit				Specialty fruit 2/	All citrus
	Early and mid	Late (Valencia)	All 1/	Seedless		Seedy	All 1/		
				White	Colored				
	1,000 trees								
Brevard	545.5	391.4	948.6	54.4	119.8	3.1	188.6	82.2	1,219.4
Broward	3.5	9.4	16.1	0.3	1.5	0.1	2.0	0.8	18.9
Charlotte	859.4	1,076.0	1,976.2	44.4	399.5	2.2	446.6	272.4	2,695.2
Citrus	16.7	1.6	19.4	0.0	2.8	0.0	2.9	1.9	24.2
Collier	2,084.5	2,508.3	4,592.8	105.1	410.5	11.3	526.9	190.3	5,310.0
Dade 3/	0.0	0.0	0.0	0.0	0.0	0.0	0.0	440.8	440.8
DeSoto	3,700.2	3,755.6	7,510.2	36.5	70.3	46.3	158.2	307.1	7,975.5
Glades	699.6	517.6	1,233.9	6.3	39.9	0.0	49.3	42.8	1,326.0
Hardee	3,821.9	1,470.9	5,407.2	25.9	69.5	12.6	116.6	355.3	5,879.1
Hendry	5,156.3	7,116.8	12,882.9	365.3	909.8	18.6	1,377.5	703.6	14,964.0
Hernando	109.8	2.1	123.0	0.1	2.7	0.0	3.0	7.3	133.3
Highlands	3,055.2	4,827.8	8,002.9	222.1	139.2	67.3	464.2	618.6	9,085.7
Hillsborough	1,792.7	604.8	2,550.7	25.9	50.3	16.6	97.7	166.0	2,814.4
Indian River	1,681.0	1,472.5	3,273.3	1,475.4	1,839.6	7.2	3,585.3	286.4	7,145.0
Lake	1,520.0	286.8	2,066.0	13.5	112.3	4.9	152.9	557.2	2,776.1
Lee	567.8	757.6	1,330.5	28.4	113.7	2.8	144.9	127.0	1,602.4
Manatee	1,540.1	908.8	2,457.7	46.8	83.1	61.2	191.1	126.9	2,775.7
Marion	99.8	3.4	106.6	0.0	5.9	0.0	6.2	26.4	139.2
Martin	1,926.4	3,234.2	5,439.9	406.0	148.5	0.1	582.0	210.8	6,232.7
Okeechobee	693.8	340.5	1,039.6	81.3	81.2	1.3	169.8	51.7	1,261.1
Orange	683.1	263.7	983.9	2.5	23.4	3.4	32.2	186.3	1,202.4
Osceola	920.9	425.9	1,370.6	78.7	70.0	3.4	153.1	114.8	1,638.5
Palm Beach	583.3	409.9	1,023.0	123.8	142.4	0.1	281.9	324.9	1,629.8
Pasco	1,106.7	233.5	1,382.4	6.5	21.2	1.6	30.3	71.5	1,484.2
Pinellas	7.5	5.4	13.7	1.0	1.2	2.0	4.3	2.7	20.7
Polk	4,848.0	3,815.7	9,311.1	307.2	300.5	122.9	802.0	1,177.2	11,290.3
Putnam	13.1	1.9	16.0	0.0	0.0	0.0	0.0	5.0	21.0
St. Lucie	2,464.6	3,513.6	6,111.5	1,798.4	3,445.4	14.1	5,360.8	724.6	12,196.9
Sarasota	91.3	98.0	189.3	13.4	37.8	0.9	52.1	31.3	272.7
Seminole	96.0	19.3	119.9	0.0	3.6	0.1	3.7	22.0	145.6
Volusia	88.7	20.6	111.1	5.9	11.6	0.4	17.9	8.2	137.2
Other 4/	4.4	0.0	4.4	0.0	0.0	0.0	0.0	20.4	24.8
<b>State total</b>	<b>40,781.8</b>	<b>38,093.6</b>	<b>81,614.4</b>	<b>5,275.1</b>	<b>8,657.2</b>	<b>404.5</b>	<b>15,004.0</b>	<b>7,264.4</b>	<b>103,882.8</b>

1/ Includes unidentified varieties. 2/ Includes limes and lemons. 3/ Surveyed as of October 1994. 4/ Flagler and Sumter counties.

OTHER STATES' CITRUS: Acreage by states, types, and age groups

ARIZONA 1/

Type	Central	Western	Total
	Acres		
Valencia oranges	2,600	3,000	5,600
Navel and sweet oranges	4,600	400	5,000
White grapefruit	1,800	200	2,000
Red blush grapefruit	1,900	2,000	3,900
Lemons	1,600	14,700	16,300
Tangerines	2,800	2,100	4,900
Total	15,300	22,400	37,700

CALIFORNIA 2/

Type	Total
	Acres
Valencia oranges	73,000
Navel oranges	118,000
Grapefruit	18,400
Lemons	45,700
Tangerines, Tangelos, and Tangors	8,500
Total	263,600

Acreage by variety and plant date is no longer available because California General Fund support for the publication of California Fruit and Nut Acreage was eliminated in the fiscal year 1993-94 budget.

TEXAS 3/

Age in years	Oranges			Grapefruit					Other 4/	All citrus
	Early and mid	Valencia	Total	Rio Star	Ruby Red	Henderson/Ray	Other	Total		
	Acres									
1 to 3	2,330	300	2,630	6,970	690	450	30	8,140	--	10,770
4 to 7	3,130	380	3,510	5,610	1,270	440	100	7,420	--	10,930
8 to 11	2,200	290	2,490	3,480	890	1,220	10	5,600	--	8,090
12+	660	310	970	590	980	340	30	1,940	--	2,910
Total	8,320	1,280	9,600	16,650	3,830	2,450	170	23,100	100	32,800

1/ 1993-94 harvested acres. 2/ 1994-95 bearing acres. 3/ Acreage as of January 1, 1995. 4/ Lemons, limes, tangelos and tangerines.

SOURCES: See page 45, Data Sources, Item 4.

**FLORIDA CITRUS: Receipts at 19 U.S. cities, September 1, 1994  
through July 31, 1995, by source**

City	Oranges		Grapefruit	
	Rail	Truck	Rail	Truck
1,000 cartons				
U.S. cities:				
Atlanta	--	697	--	329
Baltimore-Washington	12	330	14	528
Boston	2	271	11	562
Buffalo	--	17	--	111
Chicago	5	1,122	38	676
Cincinnati	--	100	--	251
Columbia	--	108	--	37
Dallas	--	7	--	8
Denver	--	--	--	--
Detroit	--	141	--	490
Los Angeles	--	57	--	182
Miami	--	194	--	136
New Orleans	--	124	--	40
New York-Newark	656	637	493	943
Philadelphia	38	361	50	360
Pittsburgh	--	92	--	301
St. Louis	--	31	--	241
San Francisco-Oakland	--	94	--	256
Seattle-Tacoma	--	26	--	183
<b>Total</b>	<b>713</b>	<b>4,409</b>	<b>606</b>	<b>5,634</b>

City	Tangerines		Tangelos	Temples
	Rail	Truck	Rail & Truck	Rail & Truck
U.S. cities:				
Atlanta	--	124	32	33
Baltimore-Washington	1	159	47	34
Boston	5	133	27	19
Buffalo	--	29	2	8
Chicago	6	389	141	14
Cincinnati	--	55	29	12
Columbia	--	21	15	6
Dallas	--	6	2	--
Denver	--	--	--	--
Detroit	--	83	21	31
Los Angeles	--	148	--	--
Miami	--	32	7	3
New Orleans	--	27	3	--
New York-Newark	63	305	45	60
Philadelphia	4	97	17	17
Pittsburgh	--	47	24	11
St. Louis	--	18	10	3
San Francisco-Oakland	--	188	1	--
Seattle-Tacoma	--	20	2	--
<b>Total</b>	<b>79</b>	<b>1,881</b>	<b>425</b>	<b>251</b>

SOURCE: See page 45, Data Sources, Item 5.



**ORANGES: Total fresh shipments in U.S. and to Canada by states of origin and imports to U.S., monthly for crop years 1990-91 through 1994-95**

Crop year	Sep	Oct	Nov	Dec	Jan	Feb	Mar	Apr	May	Jun	Jul	Aug	Total
<b>FLORIDA</b>													
	1,000 cartons												
1990-91	493	1,184	2,709	3,885	2,122	2,237	694	3,213	2,486	487	66	3	19,579
1991-92	753	2,602	3,661	3,931	1,720	1,416	1,580	2,081	1,297	397	81	26	19,544
1992-93	31	47	809	4,699	2,097	1,799	1,960	1,783	1,687	770	188	1	15,871
1993-94	39	1,412	3,197	4,580	1,910	1,412	1,556	1,406	1,506	988	270	--	18,276
1994-95	201	1,930	2,760	4,520	2,092	1,635	1,822	1,930	1,464	512	34	--	18,900
<b>ARIZONA</b>													
1990-91	--	--	168	389	124	121	744	385	76	25	10	--	2,042
1991-92	--	--	201	368	261	217	155	265	630	391	95	39	2,622
1992-93	27	25	297	378	155	119	189	266	479	125	35	15	2,110
1993-94	11	15	316	350	164	253	562	576	681	281	13	1	3,223
1994-95	--	--	--	--	--	--	--	--	--	--	--	--	NA
<b>CALIFORNIA 1/</b>													
1990-91	4,057	3,273	4,405	8,033	1,779	1,491	467	267	825	1,568	1,644	870	28,679
1991-92	1,389	846	2,519	5,817	4,855	7,673	8,465	7,619	7,006	3,801	3,682	3,978	57,650
1992-93	3,237	3,847	4,855	6,169	7,065	7,759	8,084	6,873	5,783	2,205	2,040	2,341	60,258
1993-94	3,855	3,348	4,802	8,611	9,140	9,451	10,974	11,531	8,487	5,007	523	441	76,170
1994-95	--	--	--	--	--	--	--	--	--	--	--	--	NA
<b>TEXAS</b>													
1990-91	--	--	--	--	--	--	--	--	--	--	--	--	--
1991-92	--	--	--	29	--	--	--	--	--	--	--	--	29
1992-93	2	33	64	280	181	65	34	21	--	--	--	--	680
1993-94	16	238	136	254	51	47	43	8	2	--	--	--	795
1994-95	--	147	153	1,332	291	163	60	36	21	1	--	--	2,204
<b>MEXICO 2/</b>													
1990-91	--	--	--	13	69	157	286	423	271	96	--	--	1,316
1991-92	--	32	38	7	21	30	29	7	14	7	--	--	185
1992-93	--	--	4	18	25	18	6	--	--	--	--	--	71
1993-94	--	--	--	--	--	--	--	--	--	--	--	--	--
1994-95	--	--	--	5	87	42	78	96	66	20	--	1	395
<b>OTHER COUNTRIES 3/</b>													
1990-91	23	3	4	4	18	193	202	732	127	--	--	--	1,306
1991-92	26	4	10	270	7	15	29	18	29	42	--	--	450
1992-93	35	8	2	1	4	59	39	19	--	--	--	--	167
1993-94	77	12	3	8	11	16	30	21	17	23	30	--	248
1994-95	28	10	9	8	8	10	9	25	21	--	61	287	476
<b>TOTAL</b>													
1990-91	4,573	4,460	7,286	12,324	4,112	4,199	2,393	5,020	3,785	2,176	1,720	873	52,921
1991-92	2,168	3,484	6,429	10,422	6,864	9,351	10,258	9,990	8,976	4,638	3,858	4,042	80,480
1992-93	3,332	3,960	6,031	11,545	9,527	9,819	10,312	8,962	7,949	3,100	2,263	2,357	79,157
1993-94	3,998	5,025	8,454	13,803	11,276	11,179	13,165	13,542	10,693	6,299	836	442	98,712
1994-95	738	2,356	3,325	6,508	2,983	2,438	2,665	2,594	2,206	1,058	360	594	27,825

1/ Includes small quantity tangelos and tangerines. 2/ See page 35 for footnote. 3/ Central America, Dominican Republic, Israel, Italy, Morocco, South Africa, Spain, and West Indies.

SOURCE: See Page 45, Data Sources, Item 5.

**GRAPEFRUIT: Total fresh shipments in U.S. and to Canada by states of origin and imports to U.S., monthly for crop years 1990-91 through 1994-95**

Crop year	Sep	Oct	Nov	Dec	Jan	Feb	Mar	Apr	May	Jun	Jul	Aug	Total
1,000 cartons													
<b>FLORIDA</b>													
1990-91	1,231	2,229	3,195	3,690	3,377	3,268	3,508	2,375	1,280	447	227	15	24,842
1991-92	1,437	2,717	3,252	4,057	3,414	3,171	3,271	1,741	234	5	--	--	23,299
1992-93	47	80	821	3,945	2,899	3,199	3,550	3,072	1,933	1,001	337	--	20,984
1993-94	552	3,733	4,854	5,497	6,215	6,422	7,971	5,600	2,584	1,004	216	--	44,648
1994-95	1,790	4,658	4,492	5,605	6,876	7,224	7,084	3,979	1,251	63	7	--	43,029
<b>ARIZONA 1/</b>													
1990-91	--	1	2	--	--	2	6	10	58	21	--	--	100
1991-92	--	--	--	--	--	--	1	39	91	77	17	--	225
1992-93	--	--	--	--	--	--	3	1	12	3	13	9	41
1993-94	--	--	--	--	5	3	--	4	8	9	5	--	34
1994-95	--	--	--	--	--	--	--	--	--	--	--	--	NA
<b>CALIFORNIA 1/</b>													
1990-91	22	5	2	--	--	2	7	12	67	47	70	50	284
1991-92	33	16	--	--	--	--	1	13	54	56	105	66	344
1992-93	29	5	1	--	12	42	53	53	36	26	24	41	322
1993-94	29	19	1	32	39	98	69	61	58	47	70	45	568
1994-95	--	--	--	--	--	--	--	--	--	--	--	--	NA
<b>TEXAS</b>													
1990-91	--	--	--	--	--	--	--	--	--	--	--	--	--
1991-92	--	--	--	65	--	--	--	--	--	--	--	--	65
1992-93	--	48	191	665	651	429	461	242	--	--	--	--	2,687
1993-94	1	420	596	941	705	647	592	225	2	--	--	--	4,129
1994-95	--	354	1,083	4,036	1,114	939	748	460	179	2	--	--	8,915
<b>MEXICO 2/</b>													
1990-91	--	--	--	--	--	--	--	--	--	--	--	--	--
1991-92	--	--	--	--	--	--	--	--	--	--	--	--	--
1992-93	--	--	--	--	--	--	--	--	1	--	--	--	1
1993-94	--	--	--	--	--	--	--	--	--	--	--	--	--
1994-95	--	--	--	--	--	--	--	--	--	--	--	--	--
<b>OTHER COUNTRIES 3/</b>													
1990-91	--	40	106	90	115	3,574	17	2	1	--	--	--	3,945
1991-92	35	13	131	158	159	88	31	20	--	--	--	--	635
1992-93	--	12	115	162	152	77	61	89	--	--	--	--	668
1993-94	4	3	105	156	152	97	134	105	48	--	--	--	804
1994-95	1	21	111	105	125	107	116	92	62	--	--	4	744
<b>TOTAL</b>													
1990-91	1,253	2,275	3,305	3,780	3,492	6,846	3,538	2,399	1,406	515	297	65	29,171
1991-92	1,505	2,746	3,383	4,280	3,573	3,259	3,304	1,813	379	138	122	66	24,568
1992-93	76	145	1,228	4,772	3,714	3,747	4,128	3,457	1,982	1,030	374	50	24,703
1993-94	586	4,175	5,556	6,626	7,116	7,267	8,766	5,995	2,700	1,060	291	45	50,183
1994-95	1,817	5,043	5,716	9,783	8,139	8,366	8,050	4,624	1,598	172	87	67	53,462

1/ Rail only, truck shipments not available. 2/ See page 35 for footnote. 3/ Central America, Dominican Republic, Israel, Italy, Morocco, South Africa, Spain, and West Indies.

SOURCE: See Page 45, Data Sources, Item 5.

**TANGERINES, TANGELOS, TEMPLES, AND K-EARLY: Total fresh shipments in U.S. and to Canada by states of origin and imports to U.S., monthly for crop years 1990-91 through 1994-95**

Crop year	Sep	Oct	Nov	Dec	Jan	Feb	Mar	Apr	May	Jun	Jul	Aug	Total
1,000 cartons													
<b>TANGERINES</b>													
<b>Florida</b>													
1990-91	77	342	387	211	376	474	180	17	1	--	--	--	2,065
1991-92	22	302	624	700	746	635	427	15	1	2	--	--	3,474
1992-93	1	11	400	1,648	1,134	1,095	817	175	3	1	--	--	5,285
1993-94	8	228	995	1,603	1,170	811	887	307	40	8	1	--	6,058
1994-95	127	1,015	1,608	776	673	508	387	53	9	--	--	--	5,156
<b>Arizona 1/</b>													
1990-91	--	--	--	--	--	1	--	--	--	--	--	--	1
1991-92	--	--	--	--	--	2	3	--	--	--	--	--	5
1992-93	--	--	--	--	--	--	--	--	--	--	--	--	--
1993-94	--	--	--	--	--	--	--	--	--	--	--	--	--
1994-95	--	--	--	--	--	--	--	--	--	--	--	--	NA
<b>California 2/</b>													
1990-91	--	--	--	--	--	--	--	--	--	--	--	--	--
1991-92	--	--	--	--	--	--	--	--	--	--	--	--	--
1992-93	--	--	3	10	--	5	--	--	--	--	--	--	18
1993-94	--	--	54	50	6	3	--	--	2	3	--	--	118
1994-95	--	--	--	--	--	--	--	--	--	--	--	--	NA
<b>Mexico 3/</b>													
1990-91	--	104	230	227	26	--	--	--	--	--	--	--	587
1991-92	--	100	197	119	22	3	--	--	--	--	--	--	441
1992-93	--	139	251	231	49	7	--	--	--	--	--	--	677
1993-94	--	4	82	76	15	1	--	--	--	--	--	--	178
1994-95	--	11	54	120	30	--	--	--	--	--	--	--	215
<b>TANGELOS: Florida</b>													
1990-91	4	136	555	900	346	35	1	--	--	--	--	--	1,977
1991-92	--	107	659	1,169	273	4	--	1	--	--	--	--	2,213
1992-93	--	--	174	1,160	478	33	6	--	--	--	--	--	1,851
1993-94	--	2	310	925	437	76	--	--	--	--	--	--	1,750
1994-95	--	98	486	908	290	9	1	--	--	--	--	--	1,792
<b>TEMPLES: Florida</b>													
1990-91	--	--	--	84	546	506	210	20	--	--	--	--	1,366
1991-92	--	--	--	28	730	595	123	4	--	--	--	--	1,480
1992-93	--	--	--	30	645	641	295	40	--	--	--	--	1,651
1993-94	--	--	--	--	657	501	209	30	1	--	--	--	1,398
1994-95	--	--	--	68	671	579	75	--	--	1	--	--	1,394
<b>K-EARLY: Florida</b>													
1990-91	109	87	8	--	--	--	--	--	--	--	--	--	204
1991-92	41	160	8	--	--	--	--	--	--	--	--	--	209
1992-93	14	--	--	--	--	--	--	--	--	--	--	--	14
1993-94	4	126	151	--	--	--	--	--	--	--	--	--	281
1994-95	17	94	--	--	--	--	--	--	--	--	--	--	111

1/ Rail only, truck shipments not available. 2/ Data prior to 1992-93 unavailable. 3/ See page 35 for footnote.

SOURCE: See Page 45, Data Sources, Item 5.

**ORANGES, TANGELOS, AND TEMPLES: Total fresh shipments exported by states of origin,  
monthly for crop years 1990-91 through 1994-95**

Crop year	Sep	Oct	Nov	Dec	Jan	Feb	Mar	Apr	May	Jun	Jul	Aug	Total
1,000 cartons													
<b>ORANGES</b>													
<b>Florida 1/</b>													
1990-91	28	102	293	196	164	257	425	478	183	22	3	--	2,151
1991-92	30	158	312	176	184	113	234	164	100	20	--	--	1,491
1992-93	--	--	187	195	176	152	202	235	122	41	3	--	1,313
1993-94	1	60	242	152	92	100	153	115	167	118	4	--	1,204
1994-95	5	105	193	153	164	244	341	305	176	24	--	--	1,710
<b>Arizona</b>													
1990-91	--	--	12	12	2	33	434	159	13	2	--	--	667
1991-92	--	10	13	36	23	20	302	441	234	66	8	--	1,153
1992-93	3	18	13	15	8	84	479	277	63	10	1	--	971
1993-94	--	--	8	10	--	143	433	208	26	5	--	--	833
1994-95	--	--	--	--	--	--	--	--	--	--	--	--	NA
<b>California</b>													
1990-91	1,614	833	446	1,082	516	294	172	373	1,155	1,419	795	272	8,971
1991-92	292	147	510	695	1,193	1,980	2,235	2,003	3,971	2,162	1,129	1,113	17,430
1992-93	1,884	1,796	1,284	2,038	2,898	3,236	4,048	4,496	6,088	4,770	4,198	2,906	39,642
1993-94	967	890	373	1,059	1,598	1,524	2,625	3,225	3,373	1,799	5	--	17,438
1994-95	--	--	--	--	--	--	--	--	--	--	--	--	NA
<b>Total 2/</b>													
1990-91	1,642	935	751	1,290	682	584	1,031	1,010	1,351	1,443	798	272	11,789
1991-92	322	315	835	907	1,400	2,113	2,771	2,608	4,305	2,248	1,137	1,113	20,074
1992-93	1,887	1,814	1,484	2,248	3,082	3,472	4,729	5,008	6,273	4,821	4,202	2,906	41,926
1993-94	968	950	623	1,221	1,690	1,767	3,211	3,548	3,566	1,922	9	--	19,475
1994-95	5	105	193	153	164	244	341	305	176	24	--	--	1,710
<b>TANGELOS: Florida 1/</b>													
1990-91	--	3	16	7	15	--	--	--	--	--	--	--	41
1991-92	--	3	20	17	23	--	--	--	--	--	--	--	63
1992-93	--	--	7	14	19	2	1	--	--	--	--	--	43
1993-94	--	--	6	10	19	--	--	--	--	--	--	--	35
1994-95	--	--	11	2	10	--	--	--	--	--	--	--	23
<b>TEMPLES: Florida 1/</b>													
1990-91	--	--	--	1	22	27	7	--	--	--	--	--	57
1991-92	--	--	--	--	27	29	17	--	--	--	--	--	73
1992-93	--	--	--	--	13	31	20	--	--	--	--	--	64
1993-94	--	--	--	--	13	22	7	--	--	--	--	--	42
1994-95	--	--	--	1	19	13	4	--	--	--	--	--	37

1/ Includes shipments to Canada and Mexico. 2/ Includes small quantity from Texas.

SOURCE: See Page 45, Data Sources, Item 5.

**GRAPEFRUIT AND TANGERINES: Total fresh shipments exported by states of origin,  
monthly for crop years 1990-91 through 1994-95**

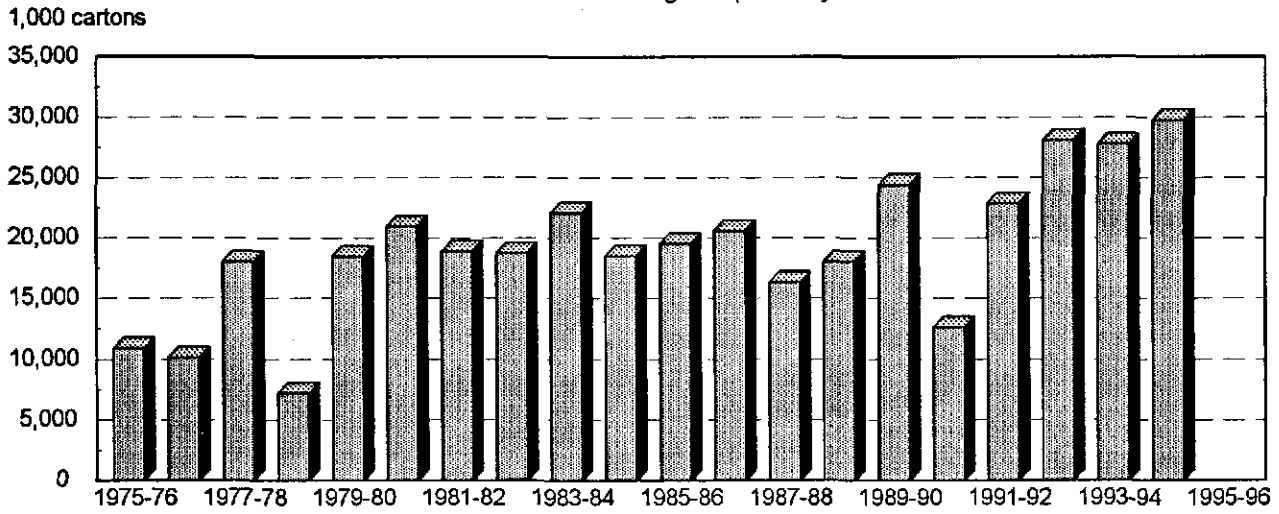
Crop year	Sep	Oct	Nov	Dec	Jan	Feb	Mar	Apr	May	Jun	Jul	Aug	Total
1,000 cartons													
<b>GRAPEFRUIT</b>													
<b>Florida 1/</b>													
1990-91	1,379	2,184	2,271	1,876	3,928	3,645	3,573	2,907	697	66	45	--	22,571
1991-92	999	2,678	2,217	1,627	3,786	4,348	4,474	1,101	16	1	--	--	21,247
1992-93	--	82	493	1,722	3,050	4,780	2,717	3,223	967	173	9	--	17,216
1993-94	160	1,447	1,941	1,969	3,674	4,029	5,274	3,185	708	119	8	--	22,514
1994-95	830	2,018	1,944	2,278	4,215	4,373	4,077	1,694	171	7	--	--	21,607
<b>Arizona</b>													
1990-91	--	--	--	--	--	--	--	--	--	--	--	--	--
1991-92	--	--	--	--	--	--	--	5	--	3	--	--	8
1992-93	--	--	--	--	--	--	--	--	3	3	3	--	9
1993-94	--	--	--	--	--	--	--	--	--	--	--	--	--
1994-95	--	--	--	--	--	--	--	--	--	--	--	--	NA
<b>California</b>													
1990-91	--	4	--	--	--	--	--	--	--	--	4	--	8
1991-92	--	--	--	--	--	--	--	--	--	3	5	--	8
1992-93	--	--	--	--	--	--	--	--	--	--	--	--	--
1993-94	--	--	--	--	--	--	--	--	8	10	3	--	21
1994-95	--	--	--	--	--	--	--	--	--	--	--	--	NA
<b>Texas</b>													
1990-91	--	--	--	--	--	--	--	--	--	--	--	--	--
1991-92	--	--	--	--	--	--	--	--	--	--	--	--	--
1992-93	--	--	--	--	--	--	--	--	--	--	--	--	--
1993-94	--	21	54	12	8	9	1	--	--	--	--	--	105
1994-95	--	--	221	9	27	38	30	40	--	--	--	--	365
<b>Total</b>													
1990-91	1,379	2,188	2,271	1,876	3,928	3,645	3,573	2,907	697	66	49	--	22,579
1991-92	999	2,678	2,217	1,627	3,786	4,348	4,474	1,106	16	7	5	--	21,263
1992-93	--	82	493	1,722	3,050	4,780	2,717	3,223	970	176	12	--	17,225
1993-94	160	1,468	1,995	1,981	3,682	4,038	5,275	3,185	716	129	11	--	22,640
1994-95	830	2,018	2,165	2,287	4,242	4,411	4,107	1,734	171	7	--	--	21,972
<b>TANGERINES: Florida 1/</b>													
1990-91	2	37	19	8	44	50	20	1	--	--	--	--	181
1991-92	--	26	55	26	53	63	47	1	--	--	--	--	271
1992-93	--	--	18	79	84	77	68	29	--	--	--	--	355
1993-94	--	6	44	36	43	56	65	27	4	--	--	--	281
1994-95	2	34	63	19	54	45	42	7	--	--	--	--	266

1/ Includes shipments to Canada and Mexico.

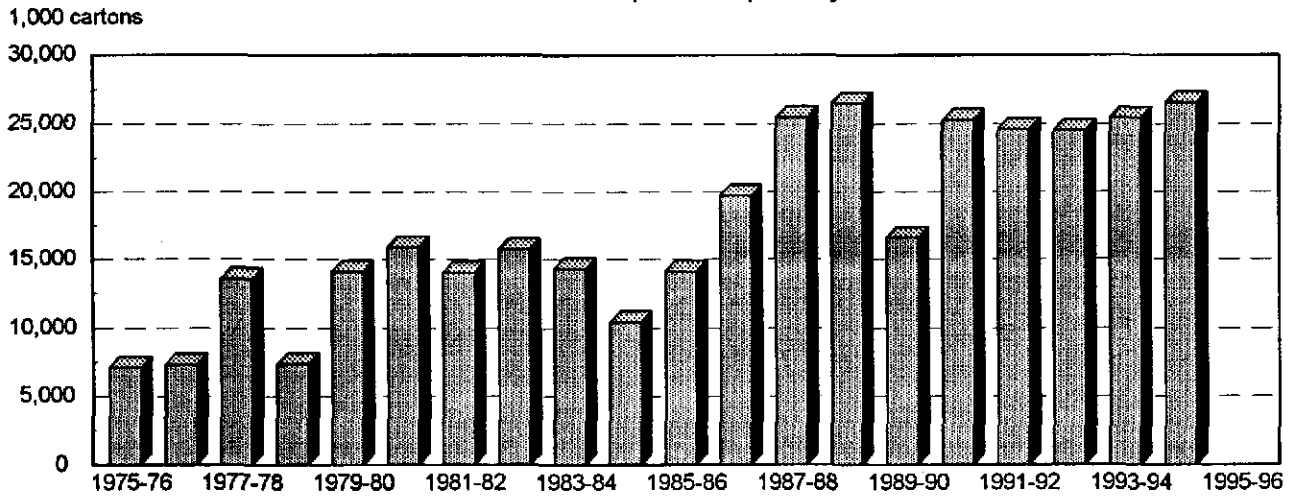
SOURCE: See Page 45, Data Sources, Item 5.

Footnote 2/ for pages 31 and 32, footnote 3/ for page 33. Final Mexican shipments to the U.S. are reported by FAS as a combined total for oranges and tangerines. The totals shown on pages 31 through 33 have been broken down proportionally into oranges and tangerines from Plant Quarantine data reported at the time of the crossing. Plant Quarantine releases give separate totals for these two types of citrus. Mexican shipments through the U.S. to Canada are not included.

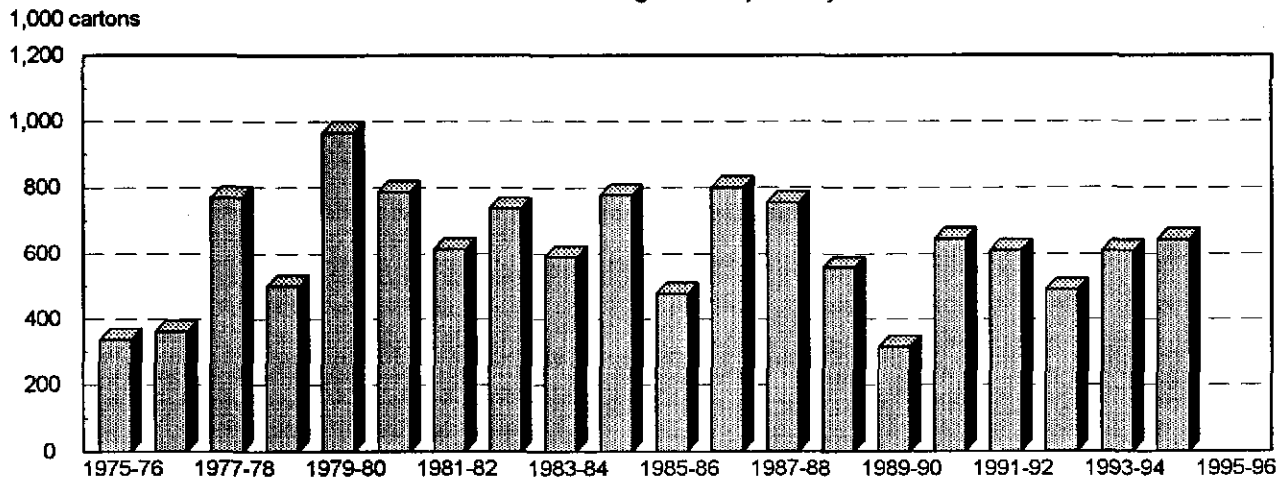
U.S. Fresh Orange Exports by Season



U.S. Fresh Grapefruit Exports by Season



U.S. Fresh Tangerine Exports by Season



## CITRUS: U.S. fresh exports, by months, 1994-95

Crop year	Oct	Nov	Dec	Jan	Feb	Mar	Apr	May	Jun	Jul	Aug	Sep	Total
1,000 cartons													
<b>ORANGES 1/</b>													
Canada	436	850	905	1,194	1,126	1,302	1,209	941	580	270	279	250	9,342
Japan	121	405	327	471	1,293	1,495	1,316	1,164	1,157	495	279	185	8,708
Hong Kong	428	414	334	450	483	667	822	720	652	575	519	479	6,543
Taiwan	2	2	1	13	164	223	273	208	83	97	38	31	1,135
Singapore	19	31	59	36	73	96	152	109	136	109	68	37	925
Republic of Korea	7	3	5	9	103	142	19	254	212	5	2	12	773
Malaysia	1	3	20	38	61	97	140	122	128	113	34	5	762
Australia	--	22	111	55	94	70	8	--	--	--	--	--	360
Philippines	5	20	18	14	55	43	30	74	23	45	12	2	341
New Zealand	--	36	38	24	74	77	48	34	--	--	--	--	331
Indonesia	19	17	6	10	22	20	10	18	25	19	5	9	180
Mexico	26	22	13	4	7	6	2	1	4	11	15	11	122
F.S.U.R.F. 2/	1	10	11	5	--	3	2	9	14	4	1	--	60
Netherlands	--	--	--	--	--	14	28	9	8	--	--	--	59
Others	5	4	13	2	9	16	29	20	13	13	7	3	134
<b>Total</b>	<b>1,070</b>	<b>1,839</b>	<b>1,861</b>	<b>2,325</b>	<b>3,564</b>	<b>4,271</b>	<b>4,088</b>	<b>3,683</b>	<b>3,035</b>	<b>1,756</b>	<b>1,259</b>	<b>1,024</b>	<b>29,775</b>
<b>GRAPEFRUIT</b>													
Japan	721	1,057	609	1,590	2,644	2,625	1,164	734	1,103	862	228	74	13,411
Canada	532	372	394	524	495	498	442	286	217	151	125	149	4,185
France	307	210	288	645	231	420	209	41	--	1	--	42	2,394
Netherlands	200	168	311	454	418	81	181	14	4	--	--	53	1,884
Taiwan	1	2	3	38	144	185	279	259	96	110	64	8	1,189
Germany	12	159	154	231	87	96	100	--	--	--	--	2	841
Republic of Korea	18	51	36	445	40	123	97	15	--	1	10	1	837
United Kingdom	33	114	78	200	55	138	54	12	--	--	--	1	685
Belgium-Luxembourg	66	35	77	148	82	78	44	2	--	--	--	8	540
Hong Kong	8	11	13	17	20	12	25	65	20	15	22	16	244
Mexico	--	--	8	1	--	--	--	--	10	32	40	8	99
Singapore	3	6	4	3	3	1	6	7	4	3	2	--	42
Others	19	27	33	41	28	17	14	6	16	1	1	--	203
<b>Total</b>	<b>1,920</b>	<b>2,212</b>	<b>2,008</b>	<b>4,337</b>	<b>4,247</b>	<b>4,274</b>	<b>2,615</b>	<b>1,441</b>	<b>1,470</b>	<b>1,176</b>	<b>492</b>	<b>362</b>	<b>26,554</b>
<b>TANGERINES</b>													
Canada	61	140	61	130	73	65	14	--	--	--	1	1	546
Japan	--	--	--	5	14	13	1	--	1	--	--	--	34
Australia	--	5	13	7	--	--	--	--	--	--	--	--	25
United Kingdom	--	--	--	--	13	4	--	--	--	--	--	--	17
New Zealand	--	4	3	1	2	--	--	--	--	--	--	--	10
F.S.U.R.F. 2/	--	3	1	--	--	--	--	--	--	--	--	--	4
Others	--	--	1	--	2	1	--	3	--	--	--	--	7
<b>Total</b>	<b>61</b>	<b>152</b>	<b>79</b>	<b>143</b>	<b>104</b>	<b>83</b>	<b>15</b>	<b>3</b>	<b>1</b>	<b>--</b>	<b>1</b>	<b>1</b>	<b>643</b>

1/ Includes Temples. 2/ Former Soviet Union Russian Federation.

SOURCE: See Page 45, Data Sources, Item 6.

**FLORIDA CITRUS: Certified citrus exports by weeks, crop year 1994-95**

Week ended	Oranges		Seedless Grapefruit		Temples	Tangelos 1/	Tan-gerines	Total exports
	Navel	Other	White	Colored				
1,000 cartons								
Sep	4	--	--	1	--	--	--	1
	11	--	--	24	23	--	--	47
	18	--	--	43	123	--	--	167
	25	--	1	71	163	--	--	236
Oct	2	1	4	154	256	--	--	419
	9	--	19	119	212	--	--	355
	16	4	25	254	452	--	--	744
	23	13	34	193	338	--	--	596
	30	15	34	108	453	--	--	633
Nov	6	9	29	233	302	--	--	597
	13	21	22	212	466	--	1	751
	20	25	15	108	384	--	1	547
	27	85	18	43	141	--	7	324
Dec	4	107	16	32	474	--	6	650
	11	41	14	95	364	--	1	525
	18	28	14	150	423	--	--	621
	25	14	9	240	405	--	--	671
Jan	1	9	16	98	380	2	2	514
	8	22	19	294	517	5	2	876
	15	36	27	335	664	8	4	1,096
	22	28	22	452	631	6	2	1,160
	29	26	29	536	673	7	1	1,287
Feb	5	8	47	592	577	6	--	1,241
	12	8	59	697	556	8	--	1,339
	19	9	61	677	474	3	--	1,236
	26	4	69	612	473	2	--	1,174
Mar	5	--	74	642	370	--	--	1,098
	12	--	76	526	455	2	--	1,070
	19	--	78	492	412	2	--	996
	26	--	92	469	430	--	--	997
Apr	2	--	80	346	451	--	--	881
	9	--	79	189	443	--	--	712
	16	--	88	120	447	--	--	656
	23	--	115	80	251	--	--	448
	30	--	60	32	151	--	--	244
May	7	--	89	22	119	--	--	231
	14	--	51	--	73	--	--	124
	21	--	50	--	22	--	--	72
	28	--	20	--	2	--	--	22
Jun	4	--	11	--	4	--	--	15
	11	--	2	--	3	--	--	5
	18	--	--	--	--	--	--	--
	25	--	--	--	--	--	--	--
	30	--	--	--	--	--	--	--
<b>Total</b>	<b>513</b>	<b>1,568</b>	<b>9,291</b>	<b>13,557</b>	<b>51</b>	<b>27</b>	<b>371</b>	<b>25,378</b>

1/ Includes K-Early citrus fruit. SOURCE: See Page 45, Data Sources, Item 7.



**FLORIDA CITRUS: Certified citrus exports, crop years 1986-87 through 1994-95 1/**

Crop year	Oranges			Grapefruit			Specialty fruit 2/			Grand Total
	Commer- cial	Govern- ment	Total	Commer- cial	Govern- ment	Total	Commer- cial	Govern- ment	Total	
1,000 cartons										
1986-87	382	--	382	15,479	3	15,482	--	--	--	15,864
1987-88	139	--	139	20,663	13	20,676	76	--	76	20,891
1988-89	154	--	154	23,566	1	23,567	31	--	31	23,752
1989-90	686	--	686	11,419	--	11,419	197	--	197	12,302
1990-91	2,335	--	2,335	22,969	--	22,969	335	2	337	25,641
1991-92	1,674	1	1,675	21,619	1	21,620	440	--	440	23,735
1992-93	1,684	--	1,684	21,286	6	21,292	400	--	400	23,736
1993-94	1,591	--	1,591	23,568	4	23,572	493	--	493	25,656
1994-95	2,080	1	2,081	22,834	14	22,848	448	1	449	25,378

1/ Shipments certified in Florida for export to foreign countries other than Canada and Mexico through 1988-89. Canada and Mexico included in export beginning 1989-90. 2/ Includes Temples, tangelos, tangerines, and K-Early Citrus Fruit. SOURCE: See Page 45, Data Sources, Item 7.

**FLORIDA CITRUS: Fresh exports, 1993-94 and 1994-95 crop years**

Destination	Grapefruit		Oranges 1/		Tangerines		Total	
	1993-94	1994-95	1993-94	1994-95	1993-94	1994-95	1993-94	1994-95
1,000 cartons								
Japan	11,541	10,428	56	--	--	--	11,597	10,428
Canada	3,206	3,133	1,325	1,402	331	315	4,862	4,850
Holland	2,293	3,761	3	113	--	--	2,296	3,874
France	2,249	2,064	--	2	--	--	2,249	2,066
Taiwan	849	619	256	600	--	--	1,105	1,219
Belgium	1,845	1,094	2	2	--	--	1,847	1,096
England	533	720	4	2	--	--	537	722
South Korea	375	461	--	--	--	--	375	461
Germany	355	233	--	--	--	--	355	233
United Kingdom	132	148	2	4	--	--	134	152
Puerto Rico	7	12	2	9	42	49	51	70
Sweden	48	47	--	7	--	--	48	54
Hong Kong	35	30	--	--	--	--	35	30
Singapore	28	28	1	2	--	--	29	30
Denmark	16	23	--	--	--	--	16	23
Finland	16	21	--	--	--	--	16	21
Bahama Islands	6	5	16	7	17	7	39	19
Italy	2	6	1	--	--	--	3	6
Colombia	--	--	1	5	--	--	1	5
Iceland	2	3	3	1	--	--	5	4
Malaysia	2	3	--	--	--	--	2	3
Barbados	--	2	1	1	--	--	1	3
Bermuda	2	2	2	--	--	--	4	2
Uruguay	--	1	--	--	--	--	--	1
China	8	1	17	--	--	--	25	1
Russia	--	1	--	--	--	--	--	1
Northern Ireland	3	1	--	--	--	--	3	1
Aruba	--	--	2	1	--	--	2	1
Saudi Arabia	3	1	--	--	--	--	3	1
Cayman Islands	--	--	--	1	--	--	--	1
Poland	7	--	--	--	--	--	7	--
Norway	7	--	--	--	--	--	7	--
Switzerland	1	--	--	--	--	--	1	--
Hawaii	1	--	--	--	--	--	1	--
<b>Total</b>	<b>23,572</b>	<b>22,848</b>	<b>1,694</b>	<b>2,159</b>	<b>390</b>	<b>371</b>	<b>25,656</b>	<b>25,378</b>

1/ Includes Temples, tangelos, and K-Early Citrus Fruit.

SOURCE: See Page 45, Data Sources, Item 7.

**FLORIDA CITRUS: Boxes of fruit processed by weeks, crop years 1993-94 and 1994-95**

Week ended	Oranges		Grapefruit 1/		Temples		
	1993-94	1994-95	1993-94	1994-95	1993-94	1994-95	
1,000 boxes							
Sep	4	--	2	8	1	--	--
	11	--	--	--	1	--	--
	18	--	1	--	1	--	--
	25	--	11	2	61	--	--
	30	12	23	54	112	--	--
Oct	9	20	46	72	137	--	--
	16	38	149	85	236	--	--
	23	78	622	138	282	--	--
	30	163	1,563	225	303	--	--
Nov	6	298	3,365	233	348	--	--
	13	910	5,387	236	374	--	--
	20	1,987	5,201	219	294	--	--
	27	1,789	6,178	138	146	--	--
Dec	4	4,830	8,336	204	475	--	1
	11	6,875	8,534	294	521	--	--
	18	8,204	8,684	424	601	--	9
	25	4,570	5,823	339	561	--	10
Jan	1	7,248	8,583	351	605	1	30
	8	7,925	8,509	544	888	21	63
	15	8,198	8,618	576	970	45	96
	22	8,177	8,340	633	1,093	47	177
	29	7,625	7,423	819	1,382	56	180
Feb	5	6,885	6,081	814	1,825	48	213
	12	6,507	5,607	1,108	2,097	80	294
	19	5,671	4,046	1,411	2,217	73	257
	26	5,786	3,804	1,339	2,014	181	278
Mar	5	3,882	4,378	1,735	2,782	275	97
	12	2,667	4,500	2,096	2,451	270	36
	19	1,816	5,465	2,364	2,439	156	13
	26	2,290	6,142	2,213	2,151	80	5
Apr	2	2,853	6,715	1,776	1,479	72	1
	9	4,745	7,314	1,901	1,372	33	--
	16	5,428	6,851	1,566	1,056	15	1
	23	5,584	7,119	1,190	722	1	--
	30	6,092	6,396	1,094	549	2	--
May	7	5,962	6,380	790	435	--	--
	14	5,840	5,527	600	248	--	--
	21	5,626	4,207	316	85	--	--
	28	5,415	3,618	256	31	--	--
Jun	4	4,045	2,149	119	26	1	--
	11	3,189	1,528	101	8	1	--
	18	2,495	1,100	43	5	--	--
	25	1,670	415	27	6	--	--
	30	734	109	27	21	1	1
Jul	9	107	14	9	3	--	--
	16	17	14	2	3	--	--
	31	74	62	18	10	1	2
Remainder		175	111	6	17	5	1
Total 2/	16	164,502	195,050	28,532	33,461	1,465	1,765

1/ Total includes non-certified seedy grapefruit. 2/ 1994-95 Preliminary.  
 SOURCE: See Page 45, Data Sources, Item 7.

(Continued)

FLORIDA CITRUS: Boxes of fruit processed by weeks, crop years 1993-94 and 1994-95 (Continued)

Week ended	Tangelos		Tangerines 1/		Honey Tangerines		K-Early	
	1993-94	1994-95	1993-94	1994-95	1993-94	1994-95	1993-94	1994-95
1,000 boxes								
Sep	4	--	--	--	--	--	--	--
	11	--	--	--	--	--	--	--
	18	--	--	--	--	--	--	--
	25	--	--	--	2	--	--	1
	30	--	--	1	3	--	--	1
Oct	9	--	--	3	11	--	--	3
	16	--	5	4	21	--	1	4
	23	--	20	6	46	--	4	4
	30	--	43	17	56	--	9	6
Nov	6	2	46	31	81	--	11	8
	13	11	76	35	94	--	11	9
	20	33	55	42	51	--	3	10
	27	52	97	17	46	--	4	5
Dec	4	112	179	34	51	--	5	3
	11	143	169	39	36	--	1	1
	18	133	178	59	25	--	2	--
	25	49	98	29	16	--	3	2
Jan	1	98	183	45	8	--	8	--
	8	190	181	68	3	2	31	--
	15	268	212	72	--	14	47	--
	22	260	193	56	1	22	35	--
	29	274	145	39	--	31	21	--
Feb	5	224	85	26	2	40	17	--
	12	194	53	8	1	34	27	--
	19	130	14	5	--	32	21	--
	26	48	10	6	--	40	20	--
Mar	5	21	2	3	--	43	24	--
	12	8	--	4	1	58	21	--
	19	1	--	4	--	39	18	--
	26	--	--	1	1	37	13	--
Apr	2	1	--	--	--	24	8	--
	9	--	--	2	--	17	2	--
	16	1	--	1	--	10	4	--
	23	--	--	--	--	6	1	--
	30	--	--	--	--	5	1	--
May	7	--	--	--	--	4	1	--
	14	--	--	--	--	1	--	--
	21	--	--	--	--	1	--	--
	28	--	--	--	--	--	--	--
Jun	4	--	--	--	--	--	--	--
	11	--	--	--	--	--	--	--
	18	--	--	--	--	--	--	--
	25	--	--	--	--	--	--	--
Jul	9	--	--	--	--	--	--	--
	16	--	--	--	--	--	--	--
	31	--	--	--	--	--	--	--
Remainder	--	--	--	--	--	--	--	
Total	2,253	2,044	657	556	460	332	50	55

1/ All varieties except Honey Tangerines.  
SOURCE: See Page 45, Data Sources, Item 7.

**FLORIDA CITRUS: Distribution of recorded utilization, by types,  
by months, crop years 1990-91 through 1994-95**

Crop year	Sep	Oct	Nov	Dec	Jan	Feb	Mar	Apr	May	Jun	Jul	Aug	Total
Percent													
<b>FRESH ORANGE SHIPMENTS</b>													
1990-91	--	9	13	19	7	13	14	14	11	--	--	--	100
1991-92	--	18	21	19	8	8	8	10	6	2	--	--	100
1992-93	--	--	23	24	11	6	14	9	9	4	--	--	100
1993-94	--	--	27	25	10	7	10	8	7	6	--	--	100
1994-95	--	11	17	23	11	9	10	9	8	2	--	--	100
<b>PROCESSED ORANGE USAGE</b>													
1990-91	--	4	14	19	17	8	14	15	9	--	--	--	100
1991-92	--	1	9	22	22	6	9	17	12	2	--	--	100
1992-93	--	--	5	17	18	16	11	15	13	5	--	--	100
1993-94	--	--	4	18	20	15	7	14	15	7	--	--	100
1994-95	--	1	12	18	18	11	13	14	11	2	--	--	100
<b>FRESH GRAPEFRUIT SHIPMENTS</b>													
1990-91	6	9	11	12	16	15	15	11	5	--	--	--	100
1991-92	5	13	13	12	16	18	17	6	--	--	--	--	100
1992-93	--	11	10	12	14	18	14	13	6	2	--	--	100
1993-94	--	10	11	12	14	15	18	13	5	2	--	--	100
1994-95	3	11	11	13	17	17	16	9	3	--	--	--	100
<b>PROCESSED GRAPEFRUIT USAGE</b>													
1990-91	1	4	6	9	17	28	19	11	5	--	--	--	100
1991-92	1	5	7	9	19	34	21	4	--	--	--	--	100
1992-93	--	2	3	5	9	16	29	21	12	3	--	--	100
1993-94	--	2	3	6	9	17	33	22	7	1	--	--	100
1994-95	--	3	4	8	16	26	29	12	2	--	--	--	100
<b>FRESH TANGERINE SHIPMENTS</b>													
1990-91	4	16	18	10	20	22	10	--	--	--	--	--	100
1991-92	--	10	18	19	22	19	12	--	--	--	--	--	100
1992-93	--	8	18	24	19	17	11	3	--	--	--	--	100
1993-94	--	5	17	25	20	14	14	5	--	--	--	--	100
1994-95	3	20	32	12	15	10	7	1	--	--	--	--	100
<b>FRESH TANGELO SHIPMENTS</b>													
1990-91	--	8	28	45	17	2	--	--	--	--	--	--	100
1991-92	--	6	32	51	11	--	--	--	--	--	--	--	100
1992-93	--	--	27	49	22	2	--	--	--	--	--	--	100
1993-94	--	--	21	51	24	4	--	--	--	--	--	--	100
1994-95	--	5	30	48	16	1	--	--	--	--	--	--	100
<b>FRESH TEMPLE SHIPMENTS</b>													
1990-91	--	--	--	6	41	38	15	--	--	--	--	--	100
1991-92	--	--	--	--	53	38	9	--	--	--	--	--	100
1992-93	--	--	--	--	42	40	18	--	--	--	--	--	100
1993-94	--	--	--	--	48	36	14	2	--	--	--	--	100
1994-95	--	--	--	7	51	37	5	--	--	--	--	--	100

**CITRUS: Per capita consumption, United States, 1984-85 through 1993-94**

Crop Year	Fresh fruit						Juices		
	Oranges & Temples	Grape-fruit	Tangerines & Tangelos	Lemons	Limes	Total 1/	Orange	Other	Total
	Pounds						Gallons, single strength		
1984-85	11.60	5.51	1.51	2.30	0.56	21.47	4.81	0.77	5.58
1985-86	13.43	6.13	1.59	2.47	0.58	24.21	5.16	0.61	5.77
1986-87	12.81	6.35	1.78	2.48	0.51	23.93	5.08	0.90	5.98
1987-88	13.90	6.69	1.77	2.47	0.56	25.39	5.33	0.48	5.81
1988-89	12.17	6.60	1.71	2.39	0.69	23.56	4.63	0.72	5.35
1989-90	12.38	4.43	1.31	2.60	0.66	21.37	3.85	0.78	4.63
1990-91	8.46	5.87	1.38	2.60	0.75	19.06	4.79	0.56	5.35
1991-92	12.91	5.95	1.94	2.54	1.03	24.36	4.33	0.54	4.87
1992-93	14.24	6.23	1.87	2.65	0.96	25.95	5.14	0.77	5.91
1993-94 2/	13.47	6.06	2.11	2.68	0.98	25.30	5.16	0.73	5.89

1/ Some figures may not add due to rounding. 2/ Preliminary for fresh fruit.

SOURCE: See Page 45, Data Sources, Item 10.

**FLORIDA CITRUS: Frozen concentrated orange juice yields at 42.0 degrees Brix for crop years 1975-76 through 1994-95**

Crop year	All orange	Early-midseason	Late
Gallons per box			
1975-76	1.39917	1.37211	1.43148
1976-77 1/	1.16105	1.17157	1.14028
1977-78	1.33668	1.30720	1.37321
1978-79	1.45540	1.42121	1.49803
1979-80	1.44931	1.41357	1.49639
1980-81 1/	1.25736	1.25888	1.25479
1981-82 1/	1.27730	1.31576	1.21496
1982-83	1.48305	1.41625	1.55933
1983-84 1/	1.28931	1.23692	1.39011
1984-85 1/	1.37578	1.39083	1.35988
1985-86	1.37834	1.35822	1.40629
1986-87	1.50827	1.44643	1.59621
1987-88	1.55342	1.48982	1.64573
1988-89	1.53625	1.47532	1.62816
1989-90 1/	1.22604	1.23446	1.20566
1990-91	1.45383	1.39285	1.55915
1991-92	1.54818	1.46846	1.69608
1992-93	1.57893	1.52480	1.68686
1993-94	1.56760	1.52073	1.65942
1994-95	1.49644	1.44400	1.58230

1/ Freeze year.

SOURCE: See page 45, Data Sources, Item 3.

**CITRUS FRUIT: Production, by selected countries, principal types,  
crop years 1990-91 through 1994-95**

Country	Crop years 1/				
	1990-91	1991-92	1992-93	1993-94	1994-95
	1,000 metric tons 2/				
<b>ORANGES</b>					
Brazil	12,362	14,974	14,117	13,710	15,710
United States 3/	7,222	8,178	10,071	9,462	10,641
Mexico	2,300	2,200	2,700	3,174	3,300
Spain	2,590	2,651	2,989	2,509	2,644
Italy	1,760	1,842	2,111	2,100	1,710
China	NA	929	1,070	1,575	1,633
Egypt	1,574	1,694	1,771	1,324	1,513
Turkey	735	830	820	840	920
Greece	819	820	872	854	865
South Africa 4/ 5/	648	712	664	770	770
Argentina	600	640	660	746	720
Morocco	1,103	780	874	916	657
Australia	485	612	572	588	470
Israel	567	513	377	365	405
Cuba	600	428	425	350	350
Cyprus	169	168	160	160	166
Gaza 6/	114	87	87	87	87
<b>Total</b>	<b>33,648</b>	<b>38,058</b>	<b>40,340</b>	<b>39,530</b>	<b>42,561</b>
<b>GRAPEFRUIT</b>					
United States	2,047	2,018	2,532	2,414	2,642
Israel	371	345	383	344	415
Cuba	332	271	307	232	230
Argentina	160	170	177	195	197
South Africa 4/	132	110	106	145	154
Mexico	100	110	118	112	136
Cyprus	119	113	110	112	95
<b>Total</b>	<b>3,261</b>	<b>3,137</b>	<b>3,733</b>	<b>3,554</b>	<b>3,869</b>
<b>LEMONS</b>					
United States	652	695	844	893	831
Argentina	550	530	590	653	650
Spain	630	555	737	611	571
Italy	637	713	752	743	565
Turkey	357	429	420	440	470
Greece	NA	120	119	137	140
<b>Total</b>	<b>2,826</b>	<b>3,042</b>	<b>3,462</b>	<b>3,477</b>	<b>3,227</b>
<b>TANGERINES</b>					
China	NA	3,457	3,990	4,265	4,423
Spain	1,575	1,340	1,521	1,631	1,751
Japan 7/	1,993	1,867	2,019	1,751	1,539
Brazil 8/	570	605	553	620	560
South Korea	NA	556	719	619	549
Italy	386	428	500	509	468
Turkey	345	390	390	405	430
Argentina	200	220	345	394	393
United States 9/	259	342	352	425	378
Morocco 10/	311	280	317	373	304
Egypt	220	298	340	205	250
Mexico	NA	165	185	165	180
<b>Total</b>	<b>5,859</b>	<b>9,948</b>	<b>11,231</b>	<b>11,362</b>	<b>11,225</b>

1/ Crop year refers to harvest and marketing period which usually begins in the fall and extends through the spring. This corresponds roughly to October-June in the Northern Hemisphere and April-December in the Southern Hemisphere. For the Southern Hemisphere, harvest occurs almost entirely during the second year shown. The harvest of lemons usually begins earlier and often extends throughout the year. 2/ One metric ton is equivalent to 2,204.6 pounds. 3/ Includes Temples. 4/ Includes some fruit produced in Swaziland, Botswana, Mozambique, and Zimbabwe which is marketed through the South African Citrus board. 5/ Includes small quantity of tangerines. 6/ Tangerine production is small and is included with oranges. 7/ Mainly satsumas (also called mandarin or unshu mikan), but also including mandarin hybrids. 8/ State of Sao Paulo only, which apparently accounts for over one-half of Brazil's production. About 120,000 tons of tangerines which are processed are included in the orange table. 9/ Includes tangelos, which account for about half of the total production. 10/ Clementines only.

**SOURCE:** See Page 45, Data Sources, Item 6.

## DATA SOURCES

All data in this summary are official statistics of United States Department of Agriculture issued by the National Agricultural Statistics Service, except when another source is shown.

1. United States Department of Commerce  
Federal-State Agricultural Weather Service  
1408 24th Street, S.E.  
Ruskin, Florida 33570
2. Hume, H. Harold, The Cultivation of Citrus Fruits  
(New York: The Macmillan Co., 1926) - Data for  
1886-87 through 1908-09
3. Florida Citrus Processors Association  
P.O. Box 780  
Winter Haven, Florida 33882-0780
4. Arizona Agricultural Statistics Service  
3003 N. Central Ave., Suite 950  
Phoenix, Arizona 85012-2994  
  
California Agricultural Statistics Service  
P.O. Box 1258  
Sacramento, California 95812  
  
Texas Agricultural Statistics Service  
P.O. Box 70  
Austin, Texas 78767
5. United States Department of Agriculture  
Agricultural Marketing Service  
Washington, D.C. 20250
6. United States Department of Agriculture  
Foreign Agricultural Service  
Washington, D.C. 20250-1000
7. Florida Department of Agriculture and Consumer Services  
Division of Fruit and Vegetables  
P.O. Box 1072  
Winter Haven, Florida 33882-1072
8. Citrus Administrative Committee  
P.O. Box 24508  
Lakeland, Florida 33802-4508
9. Florida Citrus Mutual  
P.O. Box 89  
Lakeland, Florida 33802
10. United States Department of Agriculture  
Economic Research Service  
1301 New York Avenue, N.W.  
Washington, D.C. 20005-4789
11. National Weather Service  
SE Ag Weather Service Center  
Fisheries Annex Bldg.  
P.O. Box 2246  
Auburn, AL 36831-2246

# U.S. Citrus Production Areas

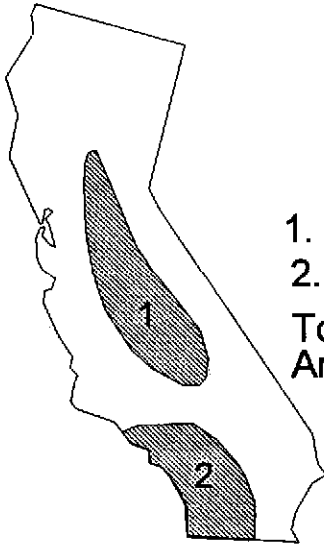
## Arizona

1. Western 22,400 acres
2. Central 15,300 acres



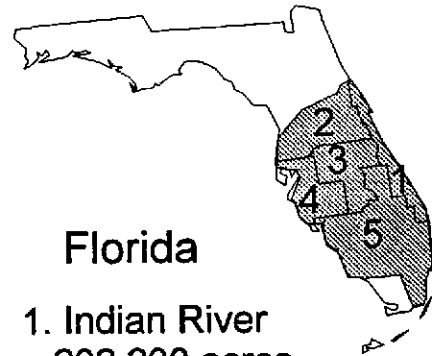
## California

1. San Joaquin Valley
  2. Southern California
- Total of 263,600 acres  
Area figures unavailable.



## Florida

1. Indian River 202,200 acres
2. Northern 47,100 acres
3. Central 193,700 acres
4. Western 171,100 acres
5. Southern 240,600 acres



## Texas

1. Lower Rio Grande Valley 32,800 acres

